



Let's start using feralSCAN

# Why use feralSCAN



Here at South Gippsland Landcare we believe everyone, no matter how big or small their property is can contribute to pest animal control by logging sightings on the feralSCAN app.

Pest animals threaten biodiversity and impact farm productivity. You can support farmers by recording sightings to help make pest animal control a funding priority

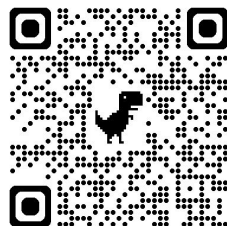
Data entered into FeralScan can be used to help coordinate on ground control to address the problems pest animals are causing in your local area. It can also identify priority areas for pest control and affect funding direction.

# Get Started - Download the feralSCAN App

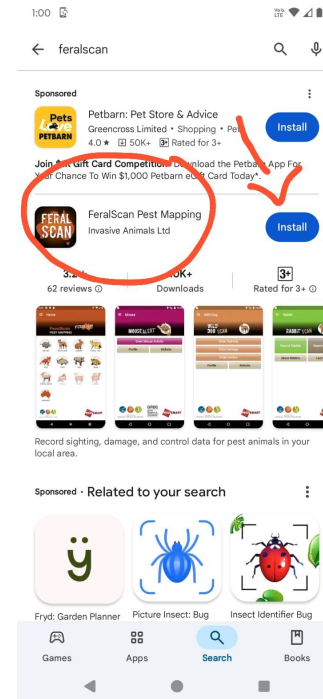
- Search feralSCAN
- Look for the feralscan logo. Remember often this will be the second app in your search so don't just click on the app at the top. Click on the blue install button
- Or you can scan the QR code to download



QR code for  
android users

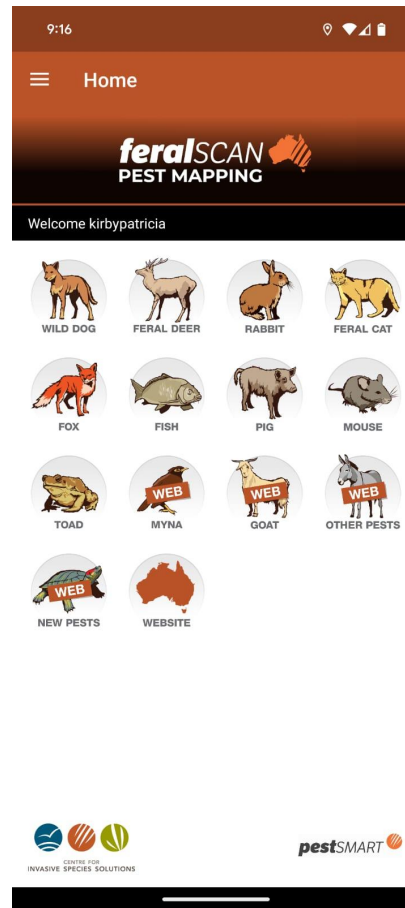


QR code for  
apple users



# Set up your profile

- Click on the blue open button
- Allow access to mapping to record locations (you can keep this information private if you wish)
- Fill out your details
- Pick your pest animal and start recording sightings



# Mapping

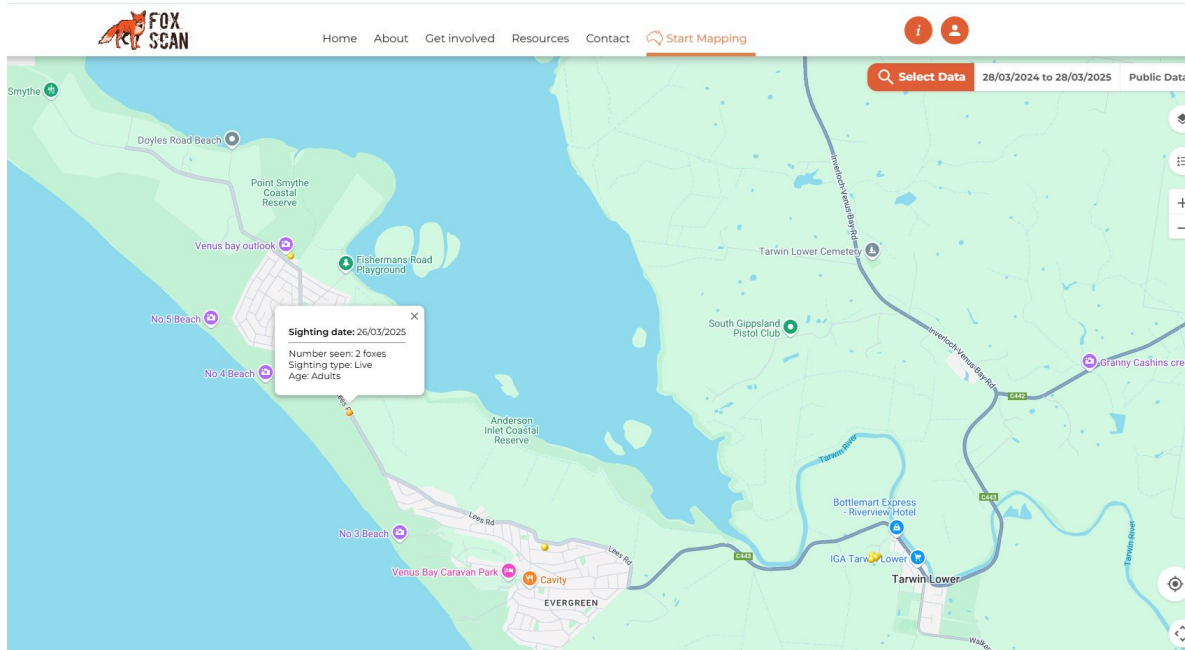
To view a map of pest animal sightings you need to visit the website. You can do this on your phone by clicking on the Australian map icon. However it is easier to navigate on a larger screen. feralScan home <https://www.feralscan.org.au/>

For privacy reasons you can not access public deer data but you can join a group or start your own. Email [feralscan@feralscan.org.au](mailto:feralscan@feralscan.org.au) to connect with a group in your in your area

[Learn more from the feralSCAN fact sheet](#)



# View your data or all public data



I was able to safely park and record this fox sighting in Venus Bay.

Fox control programs do happen in this area and this data may be helpful to contractors running the program.

Note for privacy reasons data for all species is not available publicly

## What's next

- This could be it! Please keep logging your sightings even if you can not contribute to further control. Data collection is so helpful for groups like Landcare. When there is funding available hard evidence of the issue is extremely important. **Every records helps.**
- Start a group with your neighbours. This can be a good first step of a control program. You may be planning to use shooting or trapping as a form of control. Location data would be helpful for a volunteer shooter or pest control contractor.

## More info

Glove box guide [FOX CONTROL](#)

Glove box guide [RABBIT CONTROL](#)

Glove box guide [FERAL CAT CONTROL](#)

Glove box guide [FERAL DEER CONTROL](#)

Email [kirby@sgln.net.au](mailto:kirby@sgln.net.au) for more information