



**Annual Report**  
**2021-2022**





The South Gippsland Landcare Network spans the land of the Gunaikurnai and Bunurong people, and we acknowledge them as its traditional owners. We pay our respects to their Elders past, present and future.



**Thankyou**

To everybody who has contributed to the production of this Annual Report.

**Photographs**

So many people have contributed photos that it has been difficult to credit ownership to each image. Please contact [info@sgln.net.au](mailto:info@sgln.net.au) before using any photographs in this publication.

**Editor**

Report edited by the Board and staff at South Gippsland Landcare Network.

**Designer**

Report designed by Align by Design. [www.alignbydesign.com.au](http://www.alignbydesign.com.au)

**Copyright**

Copyright in this publication belongs to South Gippsland Landcare Network 2022.

This publication is printed on recycled paper.

COVID regulations were adhered to at the time of taking all photographs included in this publication.

# Contents

<b>SGLN Overview 2021-2022</b>	6
<b>Chair's Report</b>	10
<b>Facilitator's Reports</b>	12
<b>SGLN Strategy 2020-2030</b>	17
<b>Group Reports</b>	
Allambee Community Landcare Group	22
Arawata Landcare Group	23
Corner Inlet Landcare Group	24
Fish Creek Landcare Group	25
Friends Of Turtons Creek	26
Hallston Regenerative Agriculture Group	27
Loch-Nyora Landcare Group	28
Mardan-Mirboo North Landcare Group	30
Mt Lyall Landcare Group	31
Nerrena-Tarwin Valley Landcare Group	32
Poowong-Triholm Landcare Group	34
Tarwin Landcare Group	35
<b>Project Reports</b>	
Bunurong Fox & Rabbit Control	39
Bunurong Pest & Weeds	40
Citizen Science Fauna Monitoring	41
Corner Inlet Water Quality	42
Deer Management In South Gippsland	43
Developing A Biodiversity Protection Plan For South Gippsland	44
Dung Beetle Monitoring	45
Dung Beetle Nursery Trial	46
Enhancing Soil Biology	47
Hyland Reservoir Revegetation	48
New Regional Giant Gippsland Earthworm	49
New Regional Soil Health	50
Pedal & Plant	51
Protecting Threatened Species: Giant Gippsland Earthworm And Burrowing Crayfish	52
Release Of Smut Fungus To Control Wandering Trad	53
Smart Farming For Western Port	54
Your Backyard Our Backyard	55
Woody Weed Control On The South Gippsland Highway	56
<b>Financial Reports</b>	
Treasurer's Report	59
SGLN Special Purpose Financial Report	60
SGLN Income & Expenditure Statement	61
SGLN Balance Sheet	62
SGLN Statement Of Cash Flows	63
SGLN Notes To The Financial Statements	64
SGLN Statement By Board	66
SGLN Fund Report	67
SGLN Fund Special Purpose Financial Report	68
SGLN Fund Income Statement	69
SGLN Fund Balance Sheet	69
SGLN Fund Notes To The Financial Statements	70
SGLN Fund Statement By Board	71



## SGLN overview: 2021-2022

### Structure

SGLN is a not-for-profit organisation governed by a volunteer board of management. The Board is responsible for the overall governance of the organisation. Its primary role is to protect and enhance the value of the organisation for the benefit of its members and its mission.

In 2021-22, executive and operational support was provided predominantly by two Network Facilitators and a Communications Officer. Contractors were also engaged to deliver projects and other services.

### SGLN's Mission

Through community action, to help preserve, protect and enhance the long-term sustainability of farming and the environment in South Gippsland.

### Geography

The SGLN area covers 270,000 ha and is bordered by the Strzelecki Ranges to the north and Bass Strait to the south.

The regional townships of Leongatha, Meeniyan, Poowong, Foster, Fish Creek, Mirboo North, Loch and Nyora are located in the SGLN.

### Individual & Group Membership

At the time of writing, SGLN comprised 13 Groups and over 400 Landcare member families.

The 13 Groups currently operating under the SGLN umbrella are:

- Allambee Community Landcare Group
- Allambee South Landcare Group
- Arawata Landcare Group
- Corner Inlet Landcare Group
- Fish Creek Landcare Group
- Friends of Turtons Creek
- Hallston Regenerative Agricultural Group
- Loch-Nyora Landcare Group
- Mardan-Mirboo North Landcare Group
- Mt Lyall Landcare Group
- Nerrena-Tarwin Valley Landcare Group
- Poowong-Triholm Landcare Group
- Tarwin Landcare Group

## SGLN overview: 2021-2022

### Board membership

Membership of the SGLN board is open to all adult members of SGLN.

In 2021-22, the Board comprised:

<b>Chair:</b>	Jillian Staton	<b>General Members:</b>	Amy Cameron
<b>Vice Chair:</b>	Richard Taylor & Alex Daraio		Nick Dudley
<b>Treasurer:</b>	John Currier		Herb Wilde
<b>Secretary:</b>	Mark Matthews		Rosemary Knox
			Sam Stringer

### SGLN Subcommittees

In 2021-22, there were six SGLN subcommittees.

SGLN members do not have to belong to the Board to be able to belong to a subcommittee.

<b>SGLN Fund:</b>	Nick Dudey (Chair) Jillian Staton Alex Daraio Mark Matthews	<b>Indigenous Engagement:</b>	Amy Camerson (Chair) Jillian Staton Sam Stringer Herb Wilde Jen Layton Andrea Clifford
<b>Employment Steering Committee:</b>	Richard Taylor (Chair) Jillian Staton Alex Daraio	<b>Technology:</b>	Alex Daraio (Chair) Nick Dudley Jillian Staton
<b>Communication &amp; Membership:</b>	Mark Matthews (Chair) Amy Cameron Sam Stringer Alex Daraio Jillian Staton Rosemary Knox Andrea Clifford	<b>Finance &amp; Fundraising:</b>	Jillian Staton (Chair) Richard Taylor John Currier Andrea Clifford Cassie Wright Nick Stephens



## SGLN overview: 2021-2022

## SGLN overview: 2021-2022

### Staff

<b>Landcare Facilitator (Western Sector):</b>	Andrea Clifford ***
<b>Landcare Facilitator (Eastern Sector):</b>	Nick Stephens **
<b>Projects &amp; Education Coordinator:</b>	Cassie Wright ***
<b>Project Officer (Bunurong Coast):</b>	Andrea Clifford ***
<b>Supporting Project Officer (Bunurong Fox &amp; Rabbit Control):</b>	Susan Koci **
<b>Project Officer (Biodiversity Protection Plan ^):</b>	Julie Murray *
<b>Project Officer (Citizen Science Fauna Monitoring):</b>	Kirsty Richardson *
<b>Communications Officer:</b>	Vicky Pedlow *

\* 1 day per week  
 \*\* 2 days per week  
 \*\*\* 3 days per week  
 ^ Funded via Helen MacPherson Smith Trust

### Internships

<b>RMIT</b>	Abby Argus-Smith
<b>Monash University</b>	Kirsty Richardson
<b>Federation University</b>	Jessica Steele

### Contractors and Consultants

The following individuals and organisations were engaged on an arms length basis to deliver projects or provide services:

- AgPath
- AgriSolutions
- Bass Coast Landcare Network
- Bootstrap Environmental Services
- Creation Care
- Detailed Account Solutions
- DM Images
- Drift Media
- Ecocentric Environmental Consulting
- Envirogain
- Grand Ridge Propagation Nursery
- Healthy Farming Systems
- Invert-eco
- Inspired AG Solutions
- Joe Benshemesh
- Just Add Trees
- Linking Environment Agriculture and People
- Oates Environmental Consulting
- Peter Wright
- Smolders Revegetation
- South Gippsland Shire Council
- Strzelecki Plant Farm
- Tooradise Media Network

### SGLN Partners

SGLN acknowledges the assistance and support provided by the following individuals and organisations:

- Agriculture Victoria
- Agri Solutions
- Bass Coast Landcare Network
- Brown Wigg
- Christine Connelly
- CoastCare Victoria
- Deakin University
- Department of Agriculture, Water and the Environment (Federal)
- Department of the Environment, Land, Water & Planning (Vic)
- Dung Beetle Ecosystem Engineers
- Electrical Trades Union (ETU)
- Envirogain
- Federation University
- Foster Mirror
- Gippsland Threatened Species Action Group
- GippsDairy
- Greening Australia
- Greenfleet
- LaTrobe Catchment Landcare Network
- Leongatha Rural Supplies
- Landcare Victoria
- Maffra and District Landcare Network
- Michael's IGA
- Mirboo North Secondary College
- Monash University
- Mt Best Hall Community Association Inc.
- Parks Victoria
- Port Phillip & Western Port Catchment Management Authority
- Returned Services League (Leongatha branch)
- RMIT
- South Gippsland Conservation Society
- South Gippsland Sentinel Times
- South Gippsland Shire Council
- South Gippsland Water
- Trust for Nature
- University of Melbourne
- Vic Roads
- Victorian Blackberry Taskforce
- Western Port Catchment Landcare Network
- West Gippsland Catchment Management Authority
- Yarram Yarram Landcare Network



## Chair's Report

We can get so caught up in 'doing' that sometimes, we lose sight of what we have done. The Annual Report gives us the opportunity to look back on the past year and reflect on how much we have achieved over a relatively short period of time.

A successful grant application to the Department of Environment, Water, Land and Planning enabled us to welcome Nick Stephens to the SGLN team. Nick joined Andrea Clifford as co-Facilitator and has proven to be a wonderful asset to our organisation.

In November, Andrea, Nick, Deputy Vice Chair Richard Taylor, and I were lucky enough to attend a strategic planning workshop hosted by the West Gippsland Catchment Management Authority and facilitated by Fish Creek Landcare Group member, Gillian Hayman.

The flow-ons from that workshop have been game-changing. Andrea and Nick have incorporated the skills into their roles, and I thoroughly enjoy our fortnightly Employment Steering Committee meetings to hear about their projects and ideas for building the Network.

The workshop also reinforced the value of our 2020-30 Strategy, particularly with respect to grant applications and project development. It is extremely important that all our grant applications align strongly with the Strategy and that new projects complement current or recently completed projects.

We are now seeing the benefits of that approach. All our 2022 projects build on projects that were running in 2020 or 2021. This gives us time and cost savings but, more importantly, allows us to achieve longer term outcomes than are typically possible for organisations that are as reliant on government funding as we currently are.

Of course, we couldn't achieve many of our outcomes without our staff. Cassie Wright continues to impress with her organisational skills and ability to facilitate interesting events despite all kinds of obstacles. Cassie took on a mentoring role with one of our interns, Kirsty Richardson, who played an important part in our Citizen Science Fauna Monitoring project and is now a part-time Project Officer. Contract Project Officer, Jenny O'Sullivan, also

made a huge impact in deer management. Susan Koci, who has now left, was involved in fox and rabbit control, and I thank her for her contribution.

This year, we took on three interns: Kirsty, Abbey Argus-Smith, and Jess Steele from Monash University, RMIT and Federation University respectively. I hope each of our interns received as much from the arrangement as SGLN did. We will continue offering internships into the future.

You can read about our current and recently completed projects in this report and on our website ([www.sgln.net.au](http://www.sgln.net.au)). The launch of our new site was, in my opinion, a major highlight and I thank Deputy Vice Chair, Alex Daraio, for his role in developing, maintaining, and improving it. I also thank Vicky Pedlow who assisted us with communications in 2021 and is playing a key role in this year's Annual Report.

So, what can you expect in 2023?

The release for public comment of our Biodiversity Protection Plan (BPP) is high on our agenda. The BPP has the potential to be an incredibly valuable resource - not just for SGLN but for our entire region. I thank Julie Murray for all her work on the BPP, as well as the members of the Scientific Advisory Panel.

A focus on the Great Southern Rail Trail, including more of the highly successful Pedal & Plant days run by Andrea in June. The Rail Trail is a much-loved asset in our region, and we want to work with our Groups to see how we can contribute to maintaining and enhancing it.

More projects carrying out and sharing resources about weed and pest control. Weeds and concerns about foxes, rabbits and increasingly deer, are major priorities for our members. Ad hoc projects achieve little; we need to develop long term strategies and partnerships to make a significant difference.

More projects designed to build the capacity of our member Groups. We understand that each Group has different strengths and weaknesses, and Andrea and Nick are committed to helping each Group maximise its potential.

Thank you to everyone who has contributed to SGLN's success over the past year, including our Board and our super-efficient bookkeeper, Donna Sullivan.

And finally, a big shout out to our members, as you are the lifeblood of our Network. Thank you for all the work you do on the ground and behind the scenes to make South Gippsland a better place.



**Jillian Staton**  
SGLN Chair 2021-22



## Facilitator Report: Western Sector

As the Landcare Facilitator (Western Sector) I was able to attend many general Group meetings and workshops throughout the year. I do enjoy attending individual Group meetings and events (when I can), chairing AGMs, and having the opportunity to chat with many Landcare members. I am looking forward to attending Mt. Lyall's 30-year celebration soon. It's unfortunate that COVID has postponed this event many times now. It is always a nice drive into the hills of Allambee Community to support their Group meetings too.

With surrounding Networks and the WGCMA I organised some drone training workshops for our Landcare members and am now working with members from Arawata Landcare Group to implement those skills. We have been flying over properties to collect before, during and after footage of the many projects that the Group's members are undertaking.

In consultation with Loch-Nyora Landcare Group I nominated Landcare member Rosemary Knox for the State and Territory Landcare Awards - Joan Kirner Landcare Award. Unfortunately, this nomination did not win this time. Perhaps you are the next nominee??

I have been working closely with Poowong-Triholm supporting the merger of two Groups (Poowong and District Landcare Group and Triholm Landcare Group). I am now helping the merged Group work through the issues that the Bass Reservoir Project has unfortunately faced. It is great to see that Allambee South is now looking to re-emerge since COVID, and I look forward to working with this Group to source funding around wasp issues and investigate ways we can increase membership.

I have been supporting the Hallston Regenerative Agricultural Group (HRAG) to access funding opportunities and complete the Group Health Survey. I also worked with HRAG to hold a fantastic weeds workshop at Hallston as part of our Your Backyard, Our Backyard project (read more on page 51).

Weeds are always a big issue amongst all our Groups. As well as the Hallston workshop, I organised two other Your Backyard, Our Backyard weeds workshops at Koonwarra

and am in the process of planning another for late 2022. I am also supporting selected landholders with the development and implementation of weed management plans as part of that project. Later this year, I will be working with the Arawata Group to tackle weeds as part of our Regional Roads project.

I was also fortunate enough to source funding and then coordinate the Pedal and Plant event which resulted in 1000 native seedlings being planted along a section of the Rail Trail near Jeetho (read more page 49). This was a fun-filled event that I would like to replicate on an ongoing basis.

My role also involves pizza! Twice a year I organise a gathering of the Group presidents to come together to share knowledge and build upon relationships. This is in addition to the biannual Western Cluster Group meetings whereby geographically close Landcare Groups in the Western Cluster discuss Group issues, concerns, achievements, projects and future directions.

SGLN has been successful in a significant number of grants with new funding partners and new funding streams in 2021-22. Some of these projects will commence next financial year. The initiatives implemented during 2021-22 included:

- Weed Workshops - Your Backyard, Our Backyard Project
- Website Update
- Drone Training
- Connecting People with Nature - Pedal and Plant
- Dung Beetle Nursery Trial
- Dung Beetle Monitoring Project
- Corner Inlet Water Quality Project
- Enhancing Soil Biology Project
- Protecting threatened species - giant Gippsland Earthworm and burrowing crayfish
- Citizen Science Fauna Monitoring Project
- Community Action on Pest Plant and Animals Project
- Cultural Heritage Training
- Smart Farming for Western Port
- Hyland Reservoir revegetation project
- Enhanced Knowledge and Protection of the Giant Gippsland Earthworm

- Farmers Digging Deeper
- Hooded Plover, to be rolled out next financial year

In 2021-22, we raised the bar with our communication and engagement with our Landcare Groups and stakeholders. We have maintained a continuous dialogue with our Groups through virtual meetings, phone calls, emails, cluster meetings, e-news, and the website redevelopment. SGLN shares valuable content with over 1,700 Facebook followers with posts scheduled for every 2-3 days and we circulate our monthly e-news to over 900 recipients.

This financial year has seen SGLN work closely with the West Gippsland Catchment Management Authority (WGCMA) to introduce an automated membership portal and to help our Groups transition to the portal. This included training day organisation, presentation to individual Groups and even sitting down over a cuppa with Secretaries/Treasurers to go through member lists. I look forward to supporting more Groups to transition to the portal over the next financial year.

Nick and I are also focused on brainstorming and creating what we call our "Flagship Projects" which include:

- A Rewarding Membership Experience
- Rail Trail Partnership
- Building Alliances & Partnerships
- Farm To School Project (Funding Dependant)
- Making The Most Of Farm Dams (Funding Dependant)

All in 3 days a week!!

It has been very rewarding to work in collaboration with our Groups and I look forward to continuing this effective working relationship. A grateful Thank You is due to all our staff, Board, and all our Groups for once again proving their dedication and support towards helping to preserve, protect and enhance the long-term sustainability of farming and the environment in South Gippsland. It is through their immense commitment and hard work that SGLN continues to successfully implement our business plan, our mission, and our strategic plan.



**Andrea Clifford**  
Landcare Facilitator  
Western Sector



## Facilitator Report: Eastern Sector

My role as facilitator commenced in the last week of September 2021. Taking a ‘clean slate’ approach I surveyed all the Landcare Groups within the Eastern Cluster to get an idea of how I can best support those Groups. At the same time the SGLN Employment Steering Committee (ESC) requested myself and Andrea develop some priority projects around where we would like to see SGLN develop over the coming 12 months. Also at this time SGLN was in the middle of a comprehensive re-design and review of our website. As such these were the matters that dominated the back end of 2021.

To develop some clarity around SGLN’s future directions Andrea and myself developed a series of what we called ‘Flagship Projects’, which we presented to the ESC in January 2022. These were based around the following areas:

- Building alliances & partnerships
- Great Southern Rail Trail
- Rewarding membership
- Farm Dams
- Farm to School

Three of these five have progressed during the first half of 2022. Our partnership with South Gippsland Shire Council (SGSC) has been recognised within Council’s 2022-2026 Plan with ‘Number of partnered revegetation activities with Landcare each year’ listed as an indicator of the council’s success in ‘Protecting and Enhancing Our Environment’. SGLN has been invited to brief councillors in August 2022 on how to further formalise a partnership around the themes of pests & weeds, biodiversity planning, the rail trail and revegetation. We also acknowledge that many Landcare Groups already have a history of working with SGSC.

The Great Southern Rail Trail (GSRT) flagship project, which is linked with the Partnership project, recognises the potential of the GSRT to provide multiple benefits to the region (biodiversity links, tourism, exercise) and an ideal place for Landcare activities. It is also a place on which Landcare can work together with SGSC to co-manage, achieve biodiversity benefits and extend Landcare’s reach to the wider community. The initial phase of this project will be a workshop in early 2023 with Council and Land-

care Groups to clarify aspirations for sections of the GSRT.

To progress the Farm Dams project SGLN has secured funding from Gippsland Food and Fibre to set up some demonstration sites and run field days on how well-constructed farm dams and clean water quality can improve stock health, increase biodiversity, improve drought resilience and lower methane emissions. This project will commence in 2022/23.

A major achievement by the end of 2021 was the comprehensive review of the SGLN website which was released in January 2022. This includes a dedicated ‘resources’ page for Landcare Groups, covering governance, activity planning (and COVID advice!), plus a full summary of all our current and past projects.

The end of November 2021 was also the submission date on our Facilitator Work Plans to DEWLP, in which I incorporated the feedback from Landcare Groups on what they wanted assistance with. I also spent time in 2021 attending Landcare Group meetings and events so I could meet as many Landcare members as possible.

Even with the best laid plans it is difficult to predict what demands and daily priorities (and opportunities) will come out of the woodwork. In the first half of 2022 this can be summed up in one word for me - DEER! We have made tremendous achievements in raising community awareness around this pest animal and the need to take urgent action against it. We have built great working relationships with the National Deer Control Management Team (especially Shannon Evenden who’s been fantastic), the Cardinia Deer Management Coalition (Johannes Wenzel), NSW DPI (Peter West from Feral Scan) and I want to personally thank Jenny O’Sullivan and Graham Ross for their great support in achieving what we have. These achievements can be read about under the Deer Management section of this report.

Other pest and weed control work included continuing the Bunurong Fox control work around Venus Bay and contributing to the funding application for Hooded Plover Protection which was successful. We also, after a long wait, were notified that we were successful in our \$50,000 application to Regional Roads Victoria to undertake woody

weed control in reserves adjacent to the South Gippsland Highway. The bulk of this work will commence next financial year.

There are still so many things to do!! Whilst still working on the ‘flagship projects’ I hope to focus my efforts on assisting those Landcare Groups that need a boost and helping in those areas that Groups requested assistance on when they did the survey! To this end I extend my invitation to all Landcare members that if you need help with anything please call.



**Nick Stephens**  
Landcare Facilitator  
Eastern Sector





## SGLN STRATEGY 2020-2030

### OUR VISION

SGLN represents and supports communities working together to increase biodiversity and promote sustainable land management.

### OUR GOALS & OBJECTIVES

Support and facilitate on-ground action across SGLN and its Landcare Groups.

Facilitate communication and cooperation within and between Groups, and grow membership.

Share knowledge, deliver projects, and collaborate with our Network and stakeholders.

Ensure SGLN demonstrates best practice governance, and supports our Landcare Groups to do the same.

### HOW WE ARE GOING TO GET THERE...



## THE STRATEGY

### ON-GROUND ACTION

- Develop and promote best practice land management and sustainable farming.
- Engage with local Indigenous Groups and incorporate Indigenous knowledge and best practice, where appropriate.
- Facilitate weed and pest animal control.
- Work to protect and enhance the biodiversity of the region.
- Acquire funding for on-ground works from a variety of sources.
- Encourage planting, fencing and protection of waterways and remnant vegetation.
- Deliver on-ground works that directly address climate change – focusing on resilience, adaptation, and projects with long-term observations.
- Acknowledge, protect and preserve Indigenous and historical cultural sites.

### COMMUNICATION, COOPERATION, MEMBERSHIP

- Offer accessible (online and face-to-face) and representative network meetings.
- Hold Network-wide social events.
- Share information through websites, newsletters and other communication methods, including methods that target a younger demographic (<40).
- Improve communication between the Network and Landcare Groups.
- Hold regular cluster meetings to connect Landcare Groups.
- Support Landcare Groups to run workshops and training programs.
- Assist and empower Groups to hold meetings and field days, including online formats.
- Provide new Landcare members with information about the Network and available support.

### KNOWLEDGE SHARING & PROJECT DELIVERY

- Actively seek and develop partnerships that will enhance and assist the Landcare community.
- Build partnerships and collaborate with key stakeholders, such as WGCMA, South Gippsland Water, South Gippsland Shire Council, State and Federal governments.
- Create and foster relationships with local Indigenous Groups, including through sharing resources and event information.
- Build partnerships with research institutions to generate new best practice information.
- Encourage staff and members to report on current and past project progress to stakeholders, such as WG-CMA, South Gippsland Water, South Gippsland Shire, State and Federal governments.
- Facilitate and support appropriate funding applications.
- Assist Groups with applications, where appropriate.
- Facilitate knowledge transfer within the Network.
- Develop a strategic and targeted education portfolio, delivering training that meets the needs of SGLN Groups and the wider community.
- Foster connections with local schools, reserves, sporting clubs and other community Groups.

### BEST PRACTICE GOVERNANCE

- Train the SGLN board and staff in governance practices, and provide this as an option to Groups.
- Send out rules and policies to Groups, and encouraging Groups to share their own rules and policies publicly.
- Meet legal and financial reporting requirements in a timely manner.
- Support Groups to meet their governance requirements.



# Group Reports



## Allambee Community Landcare Group

Our Group membership has a mixture of lifestyle and local farmers, with two local nursery/plant growers and a school camp. The past two years of COVID have created an interruption to our usual format, and we have found it difficult to get members back into the formality of meetings. Once restrictions were lifted, many members took the opportunity to catch up with family and friends, finally taking some of their long-awaited holidays which had been continually cancelled due to travel restrictions and lockdowns.

Our New Year's gathering was well attended at the Moonlight Creek picnic grounds in the Mt Worth State Park. We had 20 people, including a few children and grandchildren, who all enjoyed the afternoon/early evening event. The meeting gave us the opportunity to finally present framed life membership certificates to

some of our long-time and dedicated members: Evelyn Lillie, Ursula Jansen and Judy Lackman.

With the threat of COVID transmission, we were unable to hold meetings or gatherings for most of 2021. This created some extra challenges, but we finally held our 2021 AGM in February 2022. We are yet to hold our 2022 AGM.

In late 2021, we distributed a flyer and some information reminding landholders of their responsibility to act and control their weeds, with a particular emphasis on ragwort. There are a few properties of concern which have bad ragwort infestations, and we hope this will prompt some action to control the weeds in the coming spring. This pamphlet drop may be repeated shortly to serve as a follow up and reminder.



## Arawata Landcare Group

Arawata Landcare Group (ALG) has slowly been able to re-engage its members in Group activities post Victoria's COVID lockdown years. Activities continue to be primarily focussed on our vision of establishing biolinks throughout our district. Revegetation boosts habitat for wildlife, helps in the rehabilitation of degraded landscapes, enhances the quality of local waterways, and boosts the wellbeing of members through immersion in nature. These activities are primarily achieved with funding secured through the Landcare Victoria grants scheme. We are currently delivering on consecutive funded projects from 2019 through to the present. To date, members have been able to get some 30,000 plants in the ground.

ALG is also an active participant in the Tree Project, which connects volunteer seedling propagators with landholders such as our members. This is a self-funded initiative which relies on the Group's own revenue from annual membership fees.

Apart from the above projects, our members are enthusiastic supporters of the Friends of Ritchie Reserve near Korumburra. The Group's focus is to restore this beautiful remnant indigenous bush area through weed control, clearance of invasive species and replanting. The Reserve almost connects to the historical Coal Creek Skip Track. We hope to close this gap one day and deliver

another area of local significance with public access.

Our Group meets quarterly in the first month of each season. Meetings involve lively discussion of a wide range of topics, both familiar and new. Guest speakers introduce interesting topics, for example, the difficulty and benefit of re-establishing mangroves in vulnerable coastal areas (if you think it is challenging to get trees in the ground in some of our dramatically hilly country, try this in a tidal mud zone!).

We also heard about a citizen-led wildlife survey that supports SGLN's initiative to plan for biodiversity protection in South Gippsland. This engaging presentation generated lively discussion and input. The heart of the work has been consolidating data from various sources into a single overview showing the distribution of plant and native animal populations in South Gippsland. Much of the data originates from reported sightings by local residents.

Membership continues to show modest growth with six new households joining in 2022. These members are typically new to the district and bring a fresh vitality to the Group's activities. They are also committed to the natural environment, especially regarding the stewardship of their land and innovative and sustainable farming practices.

We look forward with a shared vision and purpose for the future.





## Corner Inlet Landcare Group

2022 was the first year of the newly formed Corner Inlet Landcare Group. It was created with the amalgamation of Agnes River, Franklin River, Foster North, and Stockyard Creek Groups. The Group now includes 33 paid member households and many non-paid contributors.

As we were new, it made sense to be the first to use the new membership portal as it allowed us to get our members from the various groups all in one place.

We have tried to meet up as close to bi-monthly as possible for the year. Outside of some Covid hiccups, we have maintained a good level of consistency.

There have been a few volunteer planting days, with some still to come. This included numerous planting days at Agnes River Gorge, along the rail trail, weeding days at Stockyard Creek and plantings at member properties. Outside of planting days, our members also collectively procured and planted many thousands of native shrubs and grasses donated by a nursery in Wantirna. Some of our members have also seen new or reviewed contracts with Greening Australia across our area and are having a large number of trees planted out on their properties.

This year we have seen a greater focus on deer and deer control across the region, with many of our members in the hills describing plague numbers as breeding gets out of control. We have initiated a local strategy with properties and hunters for collective action. Our members have been using the Feral Scan app to log deer sightings. We are hoping to collect data and properly understand the size and scale of the problem before applying for government funding. With the help of SGLN, we have also hosted four deer management events. Three in person at Mount Best Town Hall, and one online—all fully booked.

In other news, we're hoping to become incorporated at the end of this year. We have written a new set of rules and constitution to be passed at the next AGM.

With a new base of active members, a younger cohort, and a lot of action, it's easy to say the amalgamation has been a complete success. Our groups have been reinvigorated, achieving the set-out objectives. We are hoping to keep up momentum into the coming year with some grant applications and a lot of big ideas moving forward.



## Fish Creek Landcare Group

Despite the ongoing challenges of COVID, Fish Creek Landcare Group has had a busy year within the local community.

We have a robust committee of 10, and 80 members with a large mixture of holdings from recreational small blocks to larger grazing holdings. Some are financial supporters and others are more active participants.

Through our big ongoing project, Putting Fish Back Into Fish Creek, we've completed fencing and revegetation from the upper reaches of Fish Creek to the township. Our challenge now is to continue with fencing and revegetation of the tributaries and lower reaches towards the Tarwin River. We have offered interested landowners along these waterways funds from grants to complete the proposed works.

The Group also held a stand at the Fish Creek Children's Literature festival, distributing brochures and seedlings to children.

Our commitment to informing the community on Landcare issues continues with monthly small articles in the "Fishy News" and regular articles in the Foster Mirror.

We have had two community tree planting activities with the Fish Creek Primary school, along the Great Southern Rail Trail and the Hoddle Mountain Trail, and a morning was spent cleaning and revamping the Landcare rotunda at the entrance to the town.

We would like to thank the Group's committee for their generous and ongoing support throughout the past year. We look forward to a fun and productive year ahead.





## Friends of Turtons Creek

The Friends of Turtons Creek (FoTC) have had a quiet year for on-ground activities during the 2021-2022 financial year. Most of our work has been Group administration and sending out notices to FoTC members about various Landcare activities and the Network's e-newsletters. We're currently awaiting DELWP's assessment of Turtons Creek Scenic Reserve's existing campground, after the Victorian Government passed legislation on requirements for camping on public river frontages. It's worth noting that DELWP closed the campground this past year, following an exchange of letters in 2020/2021 between FoTC and the Minister for the Environment on its poor condition. We hope to meet with representatives of DELWP and Parks Victoria soon to find out their decision about whether camping will be allowed in the Turtons Creek Scenic Reserve area.

Some FoTC members in the wider Turtons Creek area have been contacted by DELWP regarding the possibility of camping on the upper East Tarwin River, adjacent to their properties, and asking for access through their properties to the proposed campsite. We're concerned about any unregulated, unsupervised public camping on the river frontage of the East Tarwin River. Our experience with unregulated camping at Turtons Creek Reserve has shown that it leads to extensive site damage, destruction of flora and fauna, reduction in water quality, increased vandalism, fire risk and social disorder for the local community.

On a more positive note, our upcoming Annual General Meeting will be an opportunity to welcome new members; plan activities for the coming year, including raising community awareness of the area's conservation values and indigenous heritage; elect office bearers and enjoy a BBQ. Attached are some beautiful photos of Turtons Creek Reserve and Falls, taken by a professional photographer funded by the West Gippsland Catchment Management Authority.



## Hallston Regenerative Agriculture Group

Hallston Regenerative Agricultural Group (HRAG) is pleased to report that even with the uncertainty presented by ever-changing COVID restrictions, two events with attendances of around 30 people each were successfully completed for the year. In addition to these, the two Hallston properties engaged in the SGLN Enhancing Soil Biology Program finished their term on the 3-year Network-wide project.

The first event was a Tree Planting Workshop in June, generously presented by Rob Waddell (Grandridge Propagation Nursery). The 2-hour talk was full of tips to help plan plantings, from plant selection to details on how best to reduce the pain of actual planting! Rob then fielded a

range of searching questions, leaving the audience satisfied and inspired to get out into the cold and do good.

After a considerable hiatus overlaid by the troubling COVID rules, SGLN's Your Backyard Our Backyard weeds workshop was finally delivered by the Victorian Blackberry Taskforce at the Hallston Hall in February. The use of drones was discussed, with a live display provided by a commercial supplier. It was easy to see how, with the payload capability of various models, drones could have a place in remote spot-spraying of blackberries and other weeds such as ragwort in the hill country of Hallston. This half day event, which was organised by SGLN, finished with a demonstration on a nearby farm of weed manage-

ment methods including organically approved sprays and mechanical removal of some handy blackberries next to the silos. The owner of the farm was most appreciative!

Now that the turbulence and uncertainty of the past COVID-affected year is behind us, HRAG is looking forward to hosting more regular events. Expected to be delivered with a regenerative flavour, the calendar of workshops and field days is anticipated to include a wide range of topics. Some proposed subjects based on demand could include whole farm planning, remediation plantings, regenerative agriculture principles/application, and the recurring theme of weed/pest management.





## Loch-Nyora Landcare Group

Another meeting, another passing of seasons and another year. It's 2022 and just over two years since COVID changed our lives. Despite the virus, Loch Nyora Landcare Group (LNLG) has progressed and continued its community presence.

This year we received the news that we were successful with a Melbourne Water grant application to address wasps and weeds at the Loch Memorial Reserve. The wasps have been an increasing problem for users of the Reserve. An area under the suspension bridge is used by the Loch Kinder for their weekly Bush Kinder project program, and we hope to revegetate with them some time next year after the work is done.

The new Rail Trail is a wonderful asset for Loch and Nyora, and the connectedness and benefits it offers will only increase in years to come. A walk out to Hilda Falls from Loch is now easy, and with the viewing platform in place, the glory of the Falls is now shared more widely. It is hoped LNLG can work with SGSC to further beautify and maintain this natural and historical feature.

Liaising with the Jeetho community, SGLN and South Gippsland Shire Council, we were involved with a Pedal and Plant project on the Rail Trail at Jeetho. 1000 trees were

planted on the morning of 18 June by cyclists, walkers, committee and interested helpers. Lunch was enjoyed at the historic Jeetho Hall and in years to come the plantation will be part of the attraction of the Rail Trail—especially with our member Austin's adjacent plantation.

Our weed signs have been out for the weed season but unfortunately weeds continue to be a problem. It is disheartening to drive around the district in summer and see so much yellow flowering Ragwort and as President I get asked what we are doing about it. It's an ongoing issue that needs to be constantly talked about and controlled. The ever-increasing Sweet Pittosporum that is becoming prevalent is also an issue that needs addressing.

Cape Horn on Wonthaggi Road, which has our Wark memorial plantation and seat, had some vandalism during the year. We initiated repair of another table and chairs from our own funds as a goodwill gesture.

Our partnership with Melaleuca Nursery at Inverloch continues to benefit our members, who receive 10 free tube-stock plants included in their \$35 family membership.

This year, we also moved to an online portal. Members who are

currently paid up have an extra 6-month membership and do not have to renew until January.

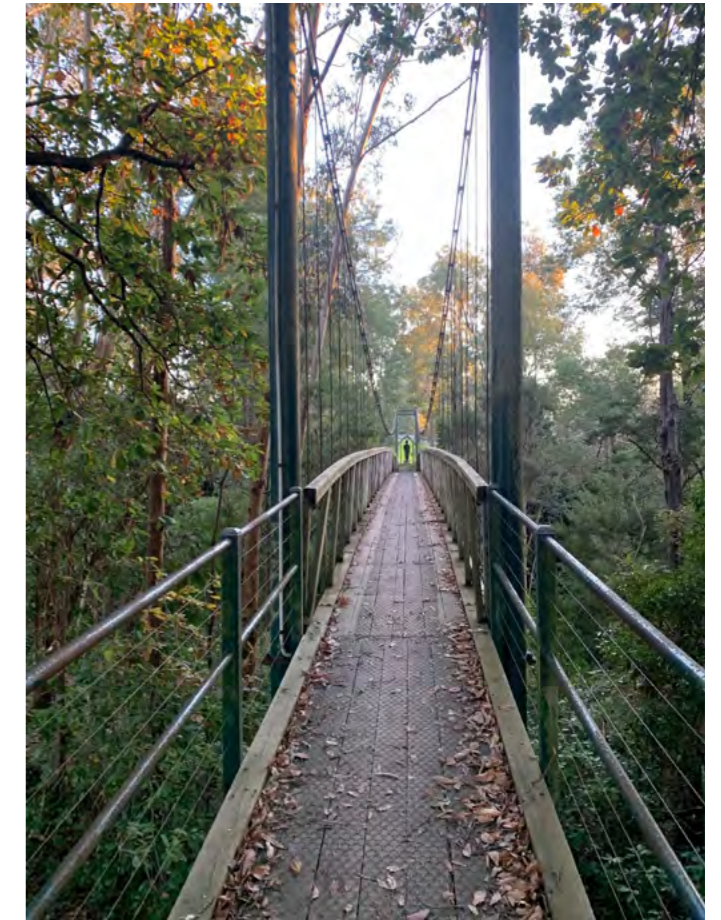
Our meetings are held every second month. We communicate to 52 families or Groups on our mailing list through emails, regular seasonal newsletters with a local feature species (sometimes season reflections as we are a tad behind) in the Loch Express and on Facebook local community pages.

I would sincerely like to thank our wonderful committee including our Secretary, Christine Connelly, our Treasurer Gary Martin, our Vice President, George, and our brilliant committee of Ron, Dallas, Steve, Daryl, Bruce, Pam and Heather. They have all stepped up to attend meetings and get behind projects. Engaging our members continues to be an objective for the Group and hopefully 2023 will see more connection and involvement.

And as always, we finish with a quote:

*“Unless someone like you cares a whole awful lot, nothing is going to get better. It's not.”*

- The Lorax





## Mardan-Mirboo North Landcare Group

Towards the end of 2022, amid easing restrictions, we managed to hold a Christmas breakup at Baromi Park. The park was very busy with everyone else thinking alike, but a faithful few turned up and we had a lovely get-together.

The end of the year also had a few dedicated members—namely Helen Hasty, Rosemary Trease and Suzanne Wightman—preparing for our 20<sup>th</sup> Birthday Celebration. This was held on 6 March at the Mardan Hall with great food and bubbles, and it was wonderful to have all involved regaling their Landcare experiences. We are also having a park bench installed in the park at Mirboo North to commemorate our 20<sup>th</sup> anniversary.

Thanks to Suzanne Wightman, we qualified for a grant for trees from the Community Bank's Mirboo North & District Investment Program. These trees were distributed to nine members, and I think they have all been planted out and will help support the koala corridor in the area.

We held a tree-bee at Jane and Peter's place in June, planting about five hundred trees.



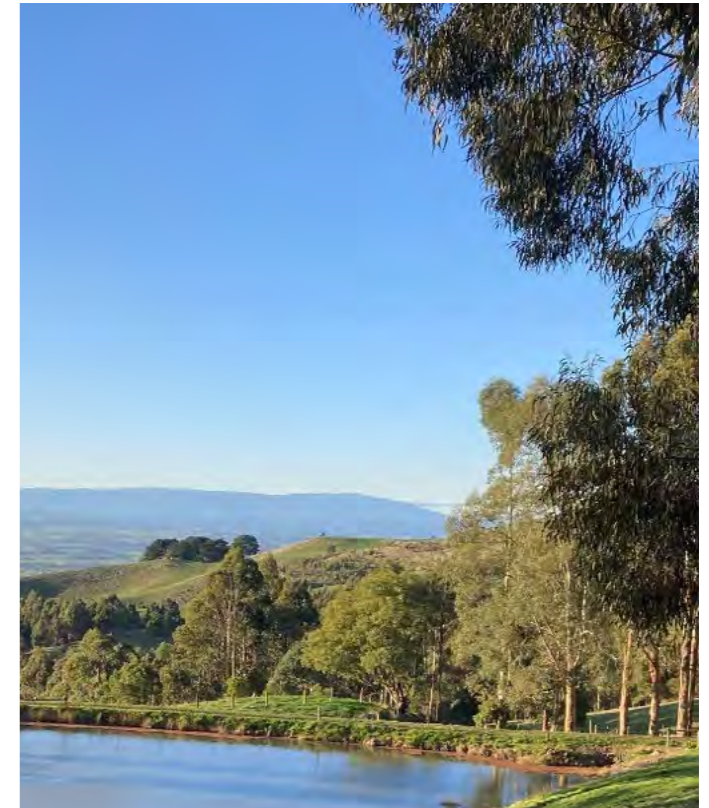
## Mt Lyall Landcare Group

Mt Lyall Landcare Group has had a quiet 12 months as COVID continues to linger around. It was supposed to be the year to celebrate 30 years of the Mt Lyall Landcare Group and the wonderful success that it has been. With the uncertainty of lockdowns and the safety of our members, however, our celebrations were postponed twice throughout the year. We will attempt to hold this event later this year.

The old Mt Lyall school site is under our care to maintain, and we were able to have the weeds sprayed last year. This is a site that provides the community a place to visit and enjoy the flora and fauna in its natural habitat. We were able to hold our AGM and elect our new office bearers and we welcome Bill Loughridge as President, Leesa Williams as Secretary and Lyn Mitchard as Treasurer.

The committee thanked outgoing President Geoff Ferrier for his many years of service. Geoff remains on the committee and continues to bring support and a wealth of knowledge to our Group.

We look forward to sharing our memories and photos of our 30th Anniversary with the Network later in the year.







## Nerrena-Tarwin Valley Landcare Group

Another year has flown by with many COVID restrictions still in place, but that doesn't mean we've been sitting on our hands. We have clocked up around 480+ volunteer hours for the year.

As part of our Regenerating the Farm project, we held a regeneration field day with 43 people at Brad and Kathy Westaway's property in April. We have also started organising the Carbon Farming/Regeneration field day for this project, which is to be held in October.

We have continued to conduct bird monitoring activities this year as part of the Blackspur Creek Wetlands Project, and our findings are published on the Birdlife Australia website. We have also had regular contact with Debbie McLees and staff from the Major Roads Projects Victoria in relation to the new highway at Koonwarra. Much of the Group also attended the community day to walk along the new roadway before it was opened.

Funding for our project, Linking the Old and New South Gippsland Highways by Restoring the Apple Tree Wetlands, arrived and we had several meetings with the Regional & Major Roads representatives, as well as Mark from Bass Coast Landcare Works Crew (BCLWC). The BCLWC have sprayed the weeds, cut down some of the sweet pittosporum and sprayed the blackberries on the Tarwin riverbank. We would also like to thank Matt Bowler and the West Gippsland Catchment Management Authority for funding the spraying of the blackberries.

This year, we began a process of emailing out a survey to members to update our Action Plan, which we'll use to obtain funding for our Group. It wasn't the most popular item of business, but we have, with a lot of time invested by Jill Vella, completed this plan.

During the year, it was brought to our attention that we had not really considered access for all members, and this caused a lack of equity for various people. We have now added Access and Equity as an objective to our Action Plan.

The Friends of the Meeniyan Rec Reserve Bushland had their first meeting in late May, facilitated by Robert Rainbow. This Group comes under our Landcare umbrella, and we welcome their new project.

We are currently applying for funding through the Victorian Landcare Grants program, which incorporates smaller projects as requested by our members.

We didn't hold a lot of meetings this year, although an enthusiastic Group walked from Stony Creek on the Rail Trail to visit the Meeniyan bird hide, followed by dinner at the Meeniyan pub.

We held our AGM via zoom this year, as COVID was active in the community. It has also limited us calling other meetings or get-togethers as we are concerned for members' health.

Our membership is now managed via the Landcare Portal, which is supported by the West Gippsland Landcare Network and West Gippsland Catchment Management Authority. This is an easier method of holding members' records and payments and will officially commence on 1 January 2023. Thanks again, Jill, for all the work you did setting up this system for our Group.

We send out monthly email newsletters (with hard copies on request) and have recently incorporated our Black Spur Creek Wetlands Project newsletter into this.

Our President has attended several SGLN Presidents meetings, and a Great Southern Rail Trail discussion meeting. Jill and Coral attended portal training at the West Gippsland Catchment Management Authority, and Jill attended volunteer seminars organised by South Gippsland Shire.

Our activities and other interesting information have been updated on our [website](#) and [Facebook page](#).

Our Group is thriving due to our fabulous Secretary, Jill Vella's, incredible knowledge, and hard work. She is hoping to reduce her workload and we are looking for an Assistant Secretary to help. Thanks also goes to our Treasurer Coral Hughes and to Kate Walsh, our Project Officer.

We also welcome Robert Rainbow, who has taken the lead for our Meeniyan subgroup.

Hopefully this coming year we can have more active meetings and get-togethers.





## Poowong-Triholm Landcare Group

Once again, the past 12 months have been somewhat affected by COVID. We managed to hold five monthly meetings, but on-ground projects were at a minimum.

The biggest achievement for the year was the amalgamation of the Poowong and Triholm Groups into the new Poowong Triholm Landcare Group. Unfortunately, however, only five families from Triholm joined the new Group.

Our only project of note has been the Little Bass Reservoir project. Despite having high hopes for this project, we have faced many obstacles. Unfortunately, the main person driving this project has suffered a lot with ill health during the year. As a result, we were unable to spend some of the grant funding in the time allocated and have now received a request to return the outstanding funds. We do, however, still wish to proceed with this project in the future.



## Tarwin Landcare Group

Our Group has continued to grow, and we now have more than 80 members who include people in the Walkerville, Venus Bay and Tarwin townships, life stylers and broadacre farmers.

Our events over the past ten months have included an orchid walk at the Tarwin Lower Cemetery, a drone workshop, a water monitoring workshop, a mangrove information day and a field day at Cath Nunn and Dave Winchester's place to see their new wetlands and learn about koalas.

A dedicated crew led by Colleen Munro and Ray Saunders has continued to mulch, weed, and generally maintain the bike path between Venus Bay and Tarwin Lower. Managing this community asset requires considerable energy and commitment. It has also revealed the importance of building good relationships with the community, especially people who own or manage land along the path.

Deer are becoming an increasing problem in our area, threatening

biodiversity, and also posing a biosecurity risk for farmers. Almost all the landholders at Cape Liptrap, covering around 9000 ha of land, are involved in a new Community Deer Control Action Group that has been established with the help of SGLN, and more than 120 deer have been culled since March. We have applied for a \$20,000 Victorian Landcare grant to help the Group monitor damage caused by deer so that they can estimate the size of the deer population, set cull targets, and evaluate the success of the control program.

We've been running a mangrove restoration project at Venus Bay. The idea for this project came from some of our members who have been concerned about the erosion occurring at Anderson Inlet. Unfortunately, delays in getting the necessary permits meant that we missed the December seed collection so have had to wait until this summer. However, the education component of the project involving four primary school excursions went well, and the design for our informative sign, to be construct-

ed at the entrance to Doyles Beach foreshore, is underway.

This project includes monthly water quality monitoring at the Tarwin Bridge for 18 months. Ian Gunn has been doing this with some volunteers and Annie Winchester has been helping us graph the results. It's still early days but unfortunately, the results suggest that the Tarwin River falls short of the water quality benchmarks set by the Environmental Protection Authority (EPA). When we have nussed out the best way to demonstrate the data, we will share it on our Facebook page and with agencies such as the WG-CMA, South Gippsland Water and the South Gippsland Shire Council. It may lead to another project in the future.

Finally, we hope to begin filming our Bush Regeneration videos soon. These videos will feature some amazing local gardens and will hopefully inspire other people to plant native species to enhance their own properties.







# Project Reports

## Bunurong Fox & Rabbit Control

**Name of project:** Enhancing Biodiversity at the Bunurong Coastal Landscape

**Funded by:** Victorian Government's Biodiversity Response Planning Program

**Partners:** WGCMA, BCLN, Peter Wright Contracting, Trust for Nature, participating landholders

**Timeframe:** 2018-2022

This three year project targeted foxes and rabbits from Venus Bay to Walkerville and was so successful that the Victorian Government provided funding for an additional six months of control work.

SGLN contracted BCLN to carry out 1080 baiting to control foxes in parks and on farmland, and to release the calici virus to weaken rabbit populations. In areas closer to townships, Peter Wright operated a fox trapping program. Landholders were also given the opportunity to acquire their Agricultural Chemical Users Permit (ACUP) with 1080 accreditation to enable them to carry out their own baiting program.

The spread of the calici virus amongst local rabbit populations was not as effective as hoped due to wetter than average summers. Anecdotal evidence, however, indicated that fox numbers declined over the course of the project.

An important legacy of this project has been the development of a pest control model involving contractors and landholders across a broad landscape that includes farmland, parkland and townships. This model is now being used in a new SGLN project, also involving BCLN and Parks Victoria, designed to protect Hooded Plovers along the coast from Waratah Bay to San Remo.

An even more valuable legacy has been the strong relationships developed with landholders in the area. Almost all the landholders participated in SGLN's Citizen Science and Bunurong Pest Animals and Weeds projects which have both had important outcomes for biodiversity in the area, especially regarding deer control. Many have also signed up for the Hooded Plover project which will include fox and weed control, education, and citizen science activities to protect nesting habitat.



Shearwater remains from fox predation at Cape Liptrap Coastal Park.



## Bunurong Pest and Weeds

**Name of project:** Bunurong Coast Community Onground Action on Pest Plants & Animals

**Funded by:** Victorian Government through the Community Volunteer Action Grants

**Partners:** Participating landholders

**Timeframe:** July 2021 - July 2022

This one-year project spring boarded off the Bunurong Coast Fox and Rabbit Control Project that ran from 2018 to early 2022. Its goal, which was to protect biodiversity through landholder-driven weed and pest animal control, was well and truly achieved. Numbers have not yet been finalised but initial indications are that over a six month period, more than 100 days of weed control was carried out across 23 properties and 91 foxes and 120 deer were dispatched. Even more importantly, landholders have established a community-led Deer Action Control Group (see below).

Jenny O’Sullivan was contracted to deliver the project. Its initial scope included four on-farm events and the development of pest and weed management plans with sixteen landholders. By its conclusion, however, five events had been delivered, as well as a Strategic Plan and a Communi-

cations Plan for deer management at Cape Liptrap and in South Gippsland.

Each event was extremely popular, attracting more than 50 participants. The first was a celebration of the unique biodiversity found at Cape Liptrap and was held at the Jelbart family property, Boggabri. The second focused on on-farm weed control while the third looked at the many ways that indigenous people used local plants. Four local naturalists attended each of these events and shared valuable knowledge and insights.

The last two events were deer information days that brought together landholders, recreational shooters, and a researcher from the National Deer Association. These events stemmed from the development of the pest and weed management plans, where it became apparent that deer were emerging as a serious

pest problem for all landholders in the area.

The deer information night led to the establishment of a community-led Deer Action Control Group at Cape Liptrap. This Group now includes practically every landholder over 9600ha and continues to attract new members. Another Group at Mt Best has also been established.

Both Groups have developed strong links with researchers at the national and state level who are assisting with education and strategy. SGLN has developed a Deer Management Information Resource Kit and there are several events being planned to help landholders better understand and tackle the growing feral deer problem. The Information Resource Kit and more details about deer action in South Gippsland can be found at [www.sgl.net.au](http://www.sgl.net.au).



## Citizen Science Fauna Monitoring

**Name of project:** Building a volunteer workforce to record wildlife and pest animals on the Bunurong Coast

**Funded by:** Victorian Government through the Community Volunteer Action Grants

**Timeframe:** 2021-2022

This project has enabled landholders and volunteers to work as citizen scientists, placing wildlife cameras in bushland areas from Venus Bay to Waratah Bay.

We kicked this project off in November 2021 with an online information session. It covered which wildlife and pest animals are found in the area and how to identify them, how to use camera traps, and how to use mobile apps to identify or report wildlife or pest animals. Videos of these sessions are available on our website.

Landholders from 18 properties have borrowed cameras and placed them in their bushland for three weeks. Twenty-six members of the public also participated as volunteers, helping place cameras in bushland areas. The project also provided an opportunity for people to volunteer from home. So far, these volunteers have helped sort almost 30,000 photographs!

Of all the photos taken, about 30% had wildlife images in them (the rest were false positives due to the wind blowing vegetation around etc.).

We have recorded 21 bird species, twelve native fauna species, and six introduced species. The Project has helped highlight the abundance of deer in the area, with deer present on every site.

Landholder participants have been overwhelmingly positive about the benefit of learning about wildlife present on their properties, and after seeing evidence of pests present have been highly motivated to control them. Every participating landholder has joined the recently formed community deer control Group, and many have increased their fox control efforts.

We have a few more cameras to go out before the project wraps up in September 2022, including a session with some local school students. Our future plans include looking for funding to enable us to roll this project out across a wider area.

Building a volunteer workforce to record wildlife and pest animals on the Bunurong Coast is supported by the Victorian Government through the Community Volunteer Action Grants.





## Corner Inlet Water Quality

**Name of project:** Corner Inlet Citizen Science Water Quality Improvement  
**Funded by:** Victorian Government (Coastcare)  
**Partners:** South Gippsland Water  
**Timeframe:** Finished September 2021

This project supported volunteers to test the water in four creeks near Foster that have showed high levels of nitrogen, phosphorus, and sediment in past studies. These contaminants affect water quality in Corner Inlet and threaten the health of the seagrass meadows that are a nursery for fish and other marine life.

Ten volunteers, and students from Foster Secondary College (where timing allowed) collected samples from two sites on each waterway. Samples were collected in each month of the year (with sampling done across a two-year period due to COVID delays). The samples were sent to a laboratory in Melbourne to test the nitrogen levels, and turbidity tubes were used to check sediment levels.

The results showed that the 75th percentile records for turbidity in all four creeks, and ammonia and nitrate: nitrite levels in three of the creeks, exceeded the State Environmental Protection guidelines for total nitrogen.

While our results are only a snapshot and not based on long term data, they support the need for further research and on-ground works to improve the health of local waterways. Our goal is that the data will inform future programs and on-ground works to improve land management practices and reduce run-off further up the catchment.

Our final seminar, which was attended by farmers, representatives from Agriculture Victoria, GippsDairy, the WGCMA and members of the local community, opened discussions about how landholders can help improve waterway health.

The final report for this project can be found on the SGLN website under [Past Projects](#).

The Corner Inlet Citizen Science Water Quality Improvement Project was supported by Coastcare Victoria and the Victorian Government.



Sue conducting water testing.

## Deer Management in South Gippsland

**Name of project:** South Gippsland Deer Action Group  
**Funded by:** unfunded (staff time) - see also Bunurong Pest and Weeds project  
**Partners:** Corner Inlet Landcare, Tarwin Landcare, National Deer Control Management Team, Cardinia Deer Management Coalition  
**Timeframe:** ongoing

The management of feral deer in South Gippsland has become an increasing concern for landholders and SGLN responded to this concern in 2021-22 by working with the local community around four key areas:

- raising public awareness of the numbers and impacts of feral deer locally
- encouraging the recording of deer sightings using the Feral Scan app or website
- highlighting the need to control deer on private land via shooting
- facilitating deer control on private land.

Activities were undertaken and supported across two focus areas - Mount Best (near Toora) and Cape Liptrap. The Mt Best activities were initiated by two concerned landholders whose efforts at revegetating their properties were being thwarted by deer which were constantly browsing the young seedlings. Taking advice from other regions in Victoria who have confronted the deer problem, we held a public Deer Information Night at Mt Best Hall in March 2022. The guest speaker for this event was Johannes Wenzel from the Cardinia Deer Management Coalition who presented the findings of an aerial survey of deer in the Cardinia Shire and allowed local landholders to relay some of their experiences with deer. This event was attended by over 30 landholders and shooters and highlighted some of

the barriers and opportunities for landholders and shooters to work closer together.

A second community event was held at Mt Best Hall in June 2022. At this event the 30+ attendees heard from Shannon Evenden, from the National Deer Control Management Team, who presented some alarming statistics on the reproductive capacity of deer and the urgent need for higher numbers of deer to be controlled.

At both events participants were encouraged to record deer sightings using the Feral Scan phone app and a video has been made with the help of Shannon Evenden and Peter West from DPI NSW to encourage its uptake. This video can be found on the SGLN website under the project page titled South Gippsland Deer Action Group.

Since these two events SGLN Facilitator Nick Stephens has compiled a Landholder Information Resource Kit to help landholders take action to control deer in a coordinated and safe fashion on their property. SGLN has also submitted a funding application for safe and responsible hunting practices under the Victorian Government's Sustainable Hunting Action Plan.

More information on this project can be found in the Bunurong Pest and Weeds project report and on the SGLN website under the project page [South Gippsland Deer Action Group](#).



Local landholder Ed Szwaja presenting at Mt Best Hall, March 2022



## Developing a Biodiversity Protection Plan for South Gippsland

**Name of project:** Developing a Biodiversity Protection Plan for South Gippsland  
**Funded by:** Helen Macpherson Smith Trust  
**Partners:** numerous contributors to date including DELWP, GreenFleet, Greening Australia, South Gippsland Conservation Society Trust for Nature & SGSC  
**Timeframe:** 2021-2023

This project has involved mapping the natural assets of South Gippsland and developing an initial draft of a South Gippsland Biodiversity Protection Plan, including potential bio links. The purpose of mapping those natural assets and developing a biodiversity protection plan is to help the community better protect and build the resilience of its natural environment by guiding its future work in protecting threatened habitats and species.

The mapping was a two-part process. One part included building a map of the region's border (the local government area of South Gippsland), correctly outlined cadastral details of Crown and public land, reserves and parks, waterways, forests and their status, vegetation extent and ecological vegetation classes, terrain, roads, towns, municipal land, Rail Trail, wetlands (both natural and infrastructure-related), and land parcels where restoration works have been carried out. This showed that there are 68 conservation and nature reserves and parks in South Gippsland, for example. It also showed where potential structures suitable for habitat might be found on all land (i.e., riparian vegetation, remnant forest, heathland and woodland, restoration plantings, etc), and the importance of retaining small native habitat ele-

ments such as road remnants, forest parcels and old paddock trees in a multi-use landscape. It has also been useful for highlighting gaps in understanding—for example, the status or condition of the region's waterways.

The second part of the mapping process involved pulling together all the records and locations of South Gippsland's biodiversity and developing species lists for the region's fish, mammals, invertebrates, birds, reptiles, slime moulds, fungi and lichen, and frogs. This process showed that there are records for over 3500 native species in South Gippsland of which 186 are conservation-listed, and a further 616 introduced species.

It is now possible to see where species—both native and introduced—have been found in our region. This will be useful for showing people what species can be found in their area, and how effective restoration works can be. It will also be useful for directing formal surveys as well as the efforts of citizen science because there are large gaps in understanding where species can be found. Some reserves have no records of the species that can be found in them, for example, and there have been limited surveys of aquatic species in the region's waterways. Tracking the location of invasive feral species

such as deer will also be important in protecting native species.

The project has created a series of mapping layers that can be used for ongoing planning and management in South Gippsland at both local (i.e., individual landholdings) and landscape (e.g., eastern Strzeleckis, Hoddle Ranges, coastal plain) scales. This resource has the potential to be used to track how protection, restoration and management of the region's natural assets are protecting native species and ecological processes.

The project has drawn on the datasets of the Department of Environment, Land, Water and Planning for identifying and mapping Crown river frontage, for example, other public land, and previous management plans. The South Gippsland Shire has provided essential mapping assistance and advice. Documentation from Greening Australia, Trust for Nature and GreenFleet has been particularly useful in identifying restoration works, biodiversity values and understandings of land status. The South Gippsland Conservation Society has provided essential information on species in South Gippsland, nature and conservation values and expertise in flora taxonomy.

## Dung Beetle Monitoring

**Name of project:** Dung Down Under in Southern Gippsland  
**Funded by:** West Gippsland CMA, through Victorian Landcare Grants  
**Partners:** Bass Coast Landcare Network  
**Timeframe:** 2022-2023

SGLN and BCLN are working together on this 12-month citizen science dung beetle monitoring project. The purpose is to help us identify which dung beetle species are present in our area, where they are found, and when they are active.

We began by calling for expressions of interest and had over 30 landholders from across Bass Coast and South Gippsland sign up to participate.

We held a project information and training day in March 2022, followed by a Zoom session for those who couldn't attend the training day. This Zoom session was recorded, and the link sent to all the project participants.

Monitoring kits were put together, including a plastic tub, wire mesh cover, produce bag (for holding the dung), magnifying glass and laminated beetle ID sheets. The participants collected their kits in April and began their monthly monitoring activity.

A 'Slack' Group was set up, and participants have been using this to share photographs of beetles found, and to ask for support with beetle identification.

Participants have been recording beetle activity and sending in their data sheets. There was significant beetle activity when the monitoring began in April, however as the weather grew colder the amount of beetle activity dropped to almost no activity at most sites.

We will continue to work with the participants to monitor beetle activity and will compile the data to determine what species are currently established in the region and when they are active. We'll also identify the gaps in dung beetle distribution and activity. This will help us work out our next steps, which may include dung beetle releases or exchanges.

Dung Down Under in Southern Gippsland – Dung Beetles to Improve Waterways and Soil Fertility is supported by the Victorian Government through the Victorian Landcare Grants.





## Dung Beetle Nursery Trial

**Name of project:** Dung Beetle Nursery Trial

**Funded by:** West Gippsland CMA, through funding from the Australian Government's National Landcare Program

**Partners:** Bass Coast Landcare Network

**Timeframe:** 2021-2022

In an ideal world we would like to have dung beetles active all year round, improving soil fertility and reducing run-off of nutrients into waterways. However, we don't seem to have many beetles active in winter and spring in South Gippsland, so the goals of this project are to help determine whether our climate is suitable for two particular species, and whether we can successfully breed them in South Gippsland.

In 2021, we set up two dung beetle nurseries at the Buckley Reserve Community Farm in Fish Creek. One nursery is for breeding a winter-active species, *Bubus bison*, and the second is for a spring active species, *Onthophagus vacca*. We are also trialling

releasing some *Bubus bison* under shade cloth (held down by sleepers) on a local farm.

We will continue to monitor the nurseries in the months ahead. We are grateful to Marg, Carolyn and Sally for feeding the beetles and monitoring their activity, and Ray for providing the cow dung.

We also held a field day in March 2022. Dr Russ Barrow from the Dung Beetle Ecosystem Engineers project and his colleague Graeme Heath spoke on the benefits of dung beetles, demonstrated a dung beetle trapping method, and discussed the use of beetle nurseries. Regional vet Euan De Gooyer also spoke about the

impacts of stock drenching on dung beetle populations.

Russ also provided us with some additional *Bubus bison* for release by six landholders across South Gippsland. Each landholder released 250 beetles under a shade cloth 'arena'. They fed the beetles for two or three months, during which time the beetles should have burrowed down and laid eggs within dung brood balls. We will follow up with the landholders next year to see if these trials have been successful.

This project is supported by West Gippsland CMA, through funding from the Australian Government's National Landcare Program.



## Enhancing Soil Biology

**Name of project:** Enhancing Soil Biology & Enhancing Soil Biology through Multi-species Pasture Planting and Regenerative Grazing Management

**Funded by:** Australian Government's Department of Agriculture—National Landcare Program, Smart Farms Small Grants—round 2 & 3

**Timeframe:** 2019-2022

The Enhancing Soil Biology project concluded in June 2022. Through this project we raised awareness and built local knowledge about the important role soil biology plays in creating healthy, resilient farming systems.

Thirty farmers established demonstration sites on their properties to trial different soil treatments (aeration with a Yeoman's plough, aeration + seaweed, aeration + mycorrhizal fungi, and aeration + a multispecies pasture). Soil biology, soil chemistry and soil carbon tests were done at the start and again 1 year later, and participants received advice on interpreting their tests and suggestions for future on-farm actions from Dr Mary Cole.

Participants also received training on soil biology, carbon farming, and on how to monitor and evaluate their own trials in the future. We also ran several public sessions, including Dr Mary Cole presenting on soil biology at the project launch, Graeme Hand on regenerative grazing, and

Jade Killoran delivering a 101 on multispecies pastures. An online forum was held in March 2022 to share the results of the project.

Two participants hosted farm walks in June 2022, with members of the public visiting a beef and a dairy farm, hearing what the farmers learnt, and what they are now doing on farm to improve their soil biology.

We also visited several participating farms and interviewed the farmers about their experience of the project, what they learnt, and actions they are now taking. These interviews were put together to create two videos about the project. These videos, along with videos from all training and public sessions, are available at [www.sgln.net.au](http://www.sgln.net.au).

This project was supported by the Department of Agriculture, Water, and the Environment, through funding from the Australian Government's National Landcare Program.







## Hyland Reservoir Revegetation

**Name of project:** Hyland Reservoir Revegetation  
**Funded by:** South Gippsland Water  
**Partners:** Gerhard Grasser, AgriSolutions  
**Timeframe:** 2020-2021

South Gippsland Water engaged SGLN to assist with the stabilisation and revegetation of a small landslip area next to Hyland Reservoir, north of Leongatha. Gerhard Grasser from AgriSolutions worked with SGLN to undertake this project, with planting done by Smoulders Revegetation.

Multiple site visits were undertaken throughout the project to undertake Visual Soil Assessments and take soil samples for lab analysis to assess nutrient and biological composition.

The seedlings were inoculated with mycorrhizal fungi powder at planting. The expectation was that the carbon compound called glomalin exuded by the mycorrhiza would help to hold soils together. The ultra-strong fine fungal hyphae also effectively extend the plant roots to access water and nutrients the plants can't otherwise reach.

Planting was completed in September 2020, and we continued to monitor the site over 2021 and 2022. The seedlings are establishing well, with minimal losses. Results of soil tests showed the mycorrhizal colonisation increased from three to 15 percent, and the visual soil assessment results also improved throughout the project.



## New Regional Giant Gippsland Earthworm

**Name of project:** Enhanced Knowledge and Protection of the Giant Gippsland Earthworm  
**Funded by:** Australian Government Environmental Restoration Fund: Priority Species Grants  
**Partners:** Bass Coast Landcare Network, Gippsland Threatened Species Action Group, Trust for Nature  
**Timeframe:** 2022-2023

SGLN has partnered with several local organisations on a new project to protect and learn more about the threatened giant Gippsland earthworm (GGE).

This project will protect GGE colonies on ten properties (including one with a covenant). Three of these properties will be in South Gippsland.

We've been busy undertaking site visits with Invert-Eco to identify the location and extent of GGE colonies and are developing risk assessments for the earthworms and plans for on-ground works.

We are also providing support to a botanist who is re-

searching vegetation associated with GGE colonies. She will also be updating planting guidelines and developing species lists for modified revegetation in areas where GGEs occur. It's important to adjust revegetation plans if GGEs are present because planting trees over colonies can dry out the ground and possibly lead to the loss of those colonies.

Two videos will be created to showcase this work and a field day will be held for the public in early 2023.

The Enhanced Knowledge and Protection of the Giant Gippsland Earthworm project received grant funding from the Australian Government.





## New Regional Soil Health

**Name of project:** Farmers Digging Deeper

**Funded by:** Australian Government's National Landcare Program

**Partners:** Western Port Catchment, Bass Coast and Latrobe Catchment Landcare Networks, Mornington Peninsula Shire, Melbourne Water

**Timeframe:** 2022-2024

This regional project will support 315 farmers across the region to increase their knowledge of soil health and to better understand the links between soil health, farm productivity and profitability. The project will also help farmers develop management pathways to actively improve their farm's soil health and condition.

The project will collect 540 soil carbon core samples, 184 soil chemistry samples and 115 soil biology samples on 115 farms. A series of soil health interpretation training workshops and field days will build farmers' knowledge on

soil carbon, natural capital accounting opportunities, and practices proven to increase soil health and productivity.

Five on-farm demonstration sites will be established throughout the region to measure the soil health impacts of multi-species pastures and regenerative grazing management.

SGLN is working with Stuart and Jacqui Tracy on a demonstration site at their Waratah Bay dairy farm. We are trialing a comparison between a high-input rye grass pasture and a multispecies pasture with treatments

to improve soil biology. The site will be monitored regularly using soil tests and other methods including pre-grazing cuts, forage quality tests, and visual soil assessments.

We have also established a SGLN discussion Group focusing on soils and regenerative agriculture, and twelve farm walks will be held over the next two years.

This project is supported by SGLN, through funding from the Australian Government's National Landcare Program.



## Pedal & Plant

**Name of project:** Connecting People to Nature – Pedal and Plant

**Funded by:** Nature's Own, Landcare Australia and the Electrical Trades Union

**Partners:** South Gippsland Shire Council, Loch-Nyora Landcare Group, Jeetho Hall Committee, Latrobe University, South Gippsland Wine Company, Hilltop Hives, Gippsland Wine Company, Smolders Revegetation, Landcare Australia, West Gippsland Catchment Management Authority

**Timeframe:** Finishes end of 2022

The purpose of this project is to address social, spiritual, emotional, intellectual, and environmental wellbeing by connecting people with nature. With funding from Nature's Own and the Electrical Trades Union SGLN brought together a broad range of people in an on-ground activity that combined healthy physical exercise, enjoyment of nature and conservation goals.

SGLN partnered with Loch-Nyora Landcare Group (LNLG), South Gippsland Shire Council (Council), Smolders Revegetation, Federation University, and local cycling clubs to further develop the Great Southern Rail Trail (Rail Trail) into a valuable biodiversity asset whilst promoting health wellness and wellbeing.

It started with a conversation between SGLN, SGSC, LNLG, and Federation University intern Jess Steele to identify a suitable planting area, and discuss what organisation would complete what task. The Council was able to prepare the site through chemical control prior to the planting day and commit to ongoing maintenance with LNLG post planting. SGLN and our intern sourced plants and worked on project communications, budgeting, catering needs, etc.

Then on Saturday 18 June 1000 native plants were planted along the Rail Trail in Jeetho. Over 40 people attended the event including SGSC Councillor Clare Williams. LNLG demonstrated a range of different planting methods including the use of a pottiputki to various participants from children to a recumbent (a bicycle that places the rider in a laid-back reclining position) bike rider from Wonthaggi, and other Rail Trail passers-by.

Participants who planted 15 or more plants on the day were given the opportunity to go into the raffle for a local produce hamper. Renae Worboys, a Jeetho local, was the lucky winner and took home a basket that included

Hill Top Hives honey, balm, Olive Twist Olive Oil, wine from South Gippsland Wine Company and Gippsland Wine Company and a great deal of other items.

The project area is located nearby a known giant Gippsland earthworm colony that is the subject of a current SGLN biodiversity enhancement project. SGLN continues to work closely with farmers and community members to better understand and conserve these unique invertebrates. Two interpretive signs will be installed highlighting the value of the ecosystem. It will include information about plants and their value to Traditional Custodians (bush tucker) whilst acknowledging Landcare involvement.

In the future SGLN aims to replicate such projects at other places along the Rail Trail not only to create a continuous bio link to enable wildlife to travel safely across the landscape but to continue to build community spirit and unity and to build upon a long-term working relationship with the Council and SGLN Landcare Groups.





## Protecting Threatened Species: giant Gippsland earthworm and burrowing crayfish

**Name of project:** Landscape-scale conservation of threatened invertebrates of the Western Strzeleckis

**Funded by:** Victorian Department of Land, Environment, Water and Planning

**Partners:** DELWP's Natural Environment Program, Latrobe Catchment Landcare Network, Gippsland Water and Federation University

**Timeframe:** Finished December 2021

Through this project, SGLN supported landholders to preserve the iconic giant Gippsland earthworm (GGE) and two threatened species of burrowing crayfish (Strzelecki and Narracan). We ran a field day at Poowong in 2019 and called for expressions of interest from landholders who have GGEs and/ or burrowing crayfish on their properties. We then contacted these landholders and provided information and advice.

Site visits to the most suitable locations were undertaken by an invertebrate ecologist and SGLN staff member. Fifty hectares were assessed across 22 properties, with 17 GGE colonies, 2 Narracan Burrowing Crayfish colonies and 1 Strzelecki Burrowing Crayfish colony identified.

On-ground works were undertaken to protect the threatened species from compaction or erosion due to stock where appropriate. This included fencing 14 hectares, and revegetating or restoring habitat on 22 hectares, across 7 properties.

Where revegetation occurred, we used a modified approach, for example, planting tussock grasses in the area close to GGE colonies, rather than large trees or shrubs which could decrease soil moisture levels and cause colonies to die out.

We also created two short videos, Protecting Giant Gippsland Earthworms on Farms, and Protecting the Narracan and Strzelecki Burrowing Crayfish on Farms.

The GGE video introduces the species, where they are found and their habitat requirements, plus a case study of two local properties. The Crayfish video introduces the two species along with a case study of a regenerated rainforest gully at Mirboo. The videos can be seen on our website at [www.sgln.net.au](http://www.sgln.net.au). For further information on these species, see [www.giantearthworm.org.au](http://www.giantearthworm.org.au) or [www.burrowingcrayfish.com.au](http://www.burrowingcrayfish.com.au).

This project was funded with the support of the Victorian Government.



Ian and Gay Cornthwaite and their new fence to protect Narracan Burrowing Crayfish habitat

## Release of Smut Fungus to Control Wandering Trad

**Name of project:** Biological Control of Wandering Tradescantia

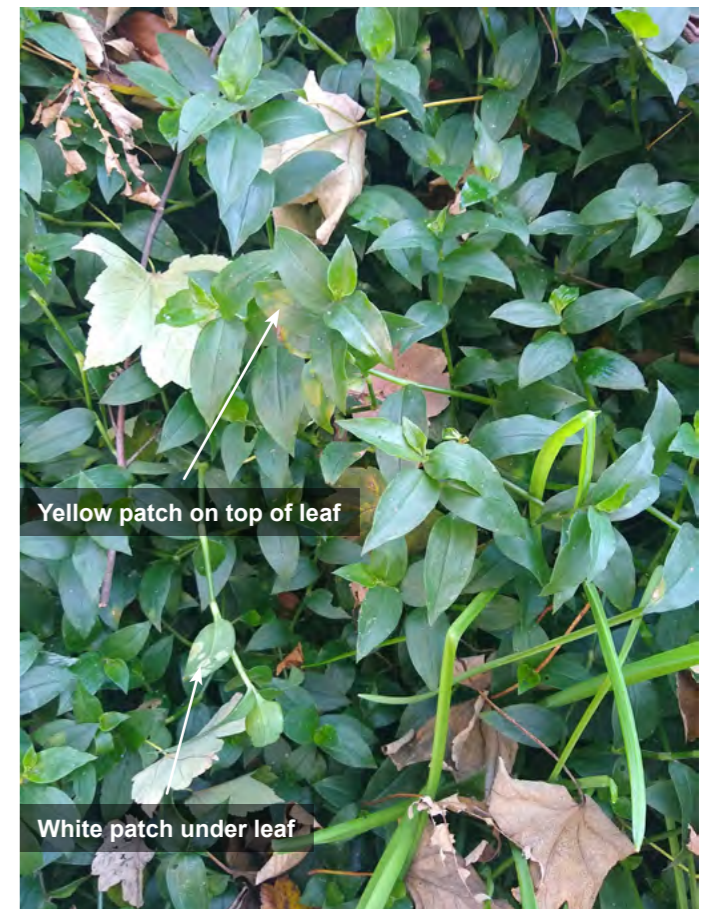
**Funded by:** unfunded (staff time)

**Partners:** Community Weed Alliance of the Dandenongs, Basscoast Landcare Network

**Timeframe:** ongoing

The primary aim of this project is to facilitate the broad-scale release of the leaf-smut fungus named *Kordyana brasiliensis*, a biological control (biocontrol) agent that specifically attacks the environmental weed wandering trad (*Tradescantia fluminensis*). The project is co-funded by CSIRO and the New South Wales Government through its Environmental Trust between July 2020 and June 2023.

Over 2021-22 Wandering Trad material pre-infected with the leaf-smut fungus was dispensed to a small number of landholders within the Network to control infestations of Wandering Trad. These trials have had varying success, due mainly to cooler weather, with further releases of the material to commence in Spring 2022.



Yellow patch on top of leaf

White patch under leaf



## Smart Farming for Western Port

**Name of project:** Smart Farming for Western Port - Increasing Awareness and Adoption of Improved Land Management Practices on Farms in the Catchment of Western Port

**Funded by:** Australian Government's Department of Agriculture - National Landcare Program

**Partners:** Port Phillip and Western Port Catchment Management Authority, Western Port Catchment Landcare Network, Bass Coast Landcare Network, Mornington Peninsula Shire Council

**Timeframe:** 2019-2023

This multi-partner regional project focuses on sustainable agriculture and building soil carbon. It includes seven on-farm demonstration sites, farmer discussion Groups and field day, and SGLN will also continue to undertake monitoring at Bob and Robyn Gray's agroforestry demonstration site (a 15-ha forestry plantation in the Strzeleckis on a farm that also runs beef and sheep).

At the time of printing, we had run two events (videos of both presentations are available on our website).

The first was a session on Methane on Farms. We had two excellent speakers, Professor Richard Eckard from the University of Melbourne, and

Dr Martino Melerba from the Blue Carbon Lab at Deakin University.

Richard spoke about options to reduce methane losses on farms, and how supply chain responses to the Paris Agreement will impact farmers. He explained how farmers will need to address methane emissions to achieve carbon neutrality, as methane emissions comprise most greenhouse gas emissions on beef or dairy farms. Richard covered things farmers can do now to reduce emissions, including herd management, feeding legumes, feeding other supplements such as oils and tannins.

Martino shared strategies for reducing

greenhouse gas emissions from farm dams. He explained that fencing and revegetating dams can reduce methane emissions by half, as well as improving water quality, stock health, and habitat for wildlife.

The second session was a farm walk with Jade Killoran from Healthy Farming Systems. Jade took us through how to identify common species used in multispecies pastures, how to establish and monitor multispecies pastures, and how to do a Visual Soil Assessment.

This project is supported Port Phillip and Westernport Catchment Management Authority through funding from the Australian Government's



## Your Backyard Our Backyard

**Name of project:** Weeds in South Gippsland – Your backyard Our Backyard Project

**Funded by:** South Gippsland Shire Council's Community Grants Program

**Partners:** Victorian Blackberry Taskforce, South Gippsland Shire Council, Agriculture Victoria, Envirogain, West Gippsland Catchment Management Authority

**Timeframe:** Finishes end of 2022

Back in July 2021 SGLN was successful with a funding application through the South Gippsland Shire Council Community Grant Program - round 2. The purpose of the project is to give landholders advice, skills, and incentives to control weeds to provide long term biodiversity benefits. This is being achieved through the development of relevant resources, property site visits and practical field days connecting landholders with relevant agencies (Victorian Blackberry Taskforce (VBTF), Envirogain, South Gippsland Shire Council (SGSC) and Agriculture Victoria). The COVID pandemic interrupted the planned works, meaning we had to postpone the practical field days several times. To date, we have managed to deliver three of the four planned workshops.

Over 90 people attended the three workshops. Each workshop focused on blackberry, ragwort, and thistles which landholders are required by law to control. Resources were developed to assist landholders; all attendees received the perfect companions to weed ID and control in the form of SGLNs Weed Control Cycle bro-

chure and the VBTF's highly informative WONS Blackberry Control manual. This information is also available on SGLN's webpage.

Contractors from Envirogain demonstrated a range of different control methods that landholders can use as part of an integrated weed control plan, while Council discussed SGSC's roadside pest plant program. A highlight at each workshop was the spray drone demonstration by Advanced UAV which encouraged many questions about new weed control techniques and how property owners can work together to control invasive weeds.

Landholders were given the opportunity to develop weed control plans with an SGLN officer. SGLN aims to provide support to landowners to protect biodiversity assets from weed invasions on private land and adjoining roadsides.

Going forward SGLN will continue to work with landholders developing the weed control plans and will plan an additional interactive weeds workshop in late 2022.





## Woody Weed Control on the South Gippsland Highway

**Name of project:** South Gippsland Highway Roadside Habitat Improvement; Meeniyan Rail Trail and Ritchie Natural Flora Reserve

**Funded by:** Rural Roads Victoria

**Partners:** South Gippsland Shire Council, Parks Vic, Friends of Ritchie's Reserve

**Timeframe:** May 2022 - March 2023

Towards the end of the 2021-22 financial year SGLN received acceptance of its \$50,000 grant application to improve the habitat and condition of high biodiversity reserves adjacent to the South Gippsland Highway. The application was submitted in April 2021 under the Gippsland Transport Environmental Projects (GTEP) Pilot Program.

The initial phase of this project involved reviewing the activities, budget and timeline of the project, the engagement of a contractor team to undertake woody weed control within the reserves and the design and installation of signage along the Great Southern Rail Trail (GSRT). Weed control work will commence in the 2022-23 financial year, together with community training events on woody weed identification and control.

This project is one example of SGLN's endeavors to establish a closer working relationship with South Gippsland Shire Council and volunteer Landcare Groups to improve the biodiversity value, and engage with users, of the GSRT.



Signage highlighting woody weed control works on the Great Southern Rail Trail near Meeniyan.





# Financial Reports

## Treasurer's report

The year to June 2022 has shown another surplus for the Network. The surplus of \$25,215, although lower than the surplus for the year to June 2021, is a healthy figure for a not-for-profit organisation. It increases the total Retained Earnings at 30 June 2022 to \$317,055, which provides a good buffer that would allow the Network to continue operations in the event of a severe reduction in funding opportunities.

A number of major projects were entered into towards the end of the year which will be delivered, wholly or in part, over the next year. The income from these, together with that from the already existing projects, will guarantee income for the Network for the next year of over \$500,000. Thanks to these projects, financial projections for 2022-23 already show an expected surplus and an increase to the Retained Earnings for next year.

We continue to have four permanent part-time employees including two facilitators who are currently funded by the State Government to June 2024.

It has been a quiet year in financial terms for the South Gippsland Landcare Fund, the tax deductible giving fund operated by the Network, but much work has been done in creating a strategy for attracting future donations. The aim is to make the Fund an important part of the Network's operations in future years.

Thanks again to Donna Sullivan of Detailed Account Services for her bookkeeping and accounting work for the Network.

**John Currier**  
SGLN Treasurer



SOUTH GIPPSLAND LANDCARE  
NETWORK INC.

A0051992A

ABN: 52 166 526 533

SPECIAL PURPOSE  
FINANCIAL REPORT

FOR THE YEAR ENDED  
30 JUNE 2022

SOUTH GIPPSLAND LANDCARE NETWORK INC.  
A0051992A  
ABN: 52 166 526 533

INCOME AND EXPENDITURE STATEMENT

FOR THE YEAR ENDED 30 JUNE 2022

INCOME	2022	2021
Operating grants received	541,727	723,359
Interest income	600	1,011
Memberships	1,370	2,100
Project income from SGLN Fund	4,500	-
Other income	128	958
<b>Total operating income</b>	<b>548,325</b>	<b>727,428</b>
Cash Flow Boost	-	5,000
JobKeeper subsidy	-	41,400
<b>Total COVID-19 income (see Note 4)</b>	<b>-</b>	<b>46,400</b>
<b>TOTAL INCOME</b>	<b>548,325</b>	<b>773,828</b>
<b>EXPENSES</b>		
Advertising & promotions	2,642	-
Audit fees	2,100	2,050
Bank charges	45	287
Board expenses	-	75
Book-keeping fees	12,858	13,680
Catering	1,375	1,030
Computer software & support	9,084	5,370
Donations	150	-
Employment expenses	204,401	164,455
Equipment under \$1,000	908	-
General expenses	728	390
Insurance	3,266	6,984
Meeting expenses	1,559	744
Membership fees	267	796
Office rent & hall hire	3,560	3,340
Postage, printing & stationery	5,325	2,066
Telephone	2,601	2,538
Training & education	3,033	5,456
Travelling expenses	4,480	1,920
Uniforms & safety clothing	481	-
Website development	-	2,000
<b>Total operating expenses</b>	<b>258,862</b>	<b>213,181</b>
Catering – Field Days	1,329	1,589
Community training course expenses	514	-
Consultants	12,144	34,500
Contractors	205,166	323,472
Fencing	24,300	-
Materials	20,795	3,867
One Tree at a Time	-	1,363
<b>Total on ground works</b>	<b>264,248</b>	<b>364,791</b>
<b>TOTAL EXPENSES</b>	<b>523,110</b>	<b>577,972</b>
<b>SURPLUS FOR THE YEAR</b>	<b>25,215</b>	<b>195,856</b>

The accompanying notes form part of this financial report.

SOUTH GIPPSLAND LANDCARE NETWORK INC.  
A0051992A  
ABN: 52 166 526 533

BALANCE SHEET

AS AT 30 JUNE 2022

	NOTE	2022	2021
<b>ASSETS</b>			
Bank accounts		526,268	176,872
Term deposits		327,427	227,035
<b>Total cash at bank</b>		<b>853,695</b>	<b>403,907</b>
Accounts receivable		2,420	184,770
Accrued income		-	9,800
Prepaid expenses		1,686	-
<b>TOTAL ASSETS</b>		<b>857,801</b>	<b>598,477</b>
<b>LIABILITIES</b>			
Accrued expenses		25,744	-
Accounts payable		2,340	17,130
BAS payable		25,872	1,894
Unexpended grant funding	2	419,225	231,751
Funds held for other groups	3	34,988	33,273
Employee provisions		27,963	18,894
Superannuation payable		4,614	3,695
<b>TOTAL LIABILITIES</b>		<b>540,746</b>	<b>306,637</b>
<b>NET ASSETS</b>		<b>317,055</b>	<b>291,840</b>
<b>MEMBERS' FUNDS</b>			
Opening balance		291,840	95,984
Current year surplus		25,215	195,856
<b>TOTAL MEMBERS' FUNDS</b>		<b>317,055</b>	<b>291,840</b>

The accompanying notes form part of this financial report.

SOUTH GIPPSLAND LANDCARE NETWORK INC.  
A0051992A  
ABN: 52 166 526 533

STATEMENT OF CASH FLOWS

FOR THE YEAR ENDED 30 JUNE 2022

	NOTE	2022	2021
<b>CASH FLOW FROM OPERATING ACTIVITIES</b>			
Operating receipts		994,670	658,241
Payments to employees and suppliers		(545,482)	(837,695)
Interest received		600	1,011
<b>Net Cash provided by / (used in) Operating Activities</b>	<b>2</b>	<b>449,788</b>	<b>(178,443)</b>
<b>CASH FLOWS FROM INVESTING ACTIVITIES</b>			
Net transfers (to) / from term deposits		(100,392)	(126,384)
<b>Net Cash used in Investing Activities</b>		<b>(100,392)</b>	<b>(126,384)</b>
<b>NET INCREASE / (DECREASE) IN CASH POSITION</b>		<b>349,396</b>	<b>(304,827)</b>
<b>CASH AT BEGINNING OF YEAR</b>		<b>176,872</b>	<b>481,699</b>
<b>CASH AT END OF YEAR</b>	<b>1</b>	<b>526,268</b>	<b>176,872</b>

The accompanying notes form part of this financial report.

NOTES TO THE STATEMENT OF CASH FLOWS

FOR THE YEAR ENDED 30 JUNE 2022

1. RECONCILIATION OF CASH:

For the purpose of the Statement of Cash Flows, Cash includes cash on hand and in at call deposits with banks and term deposits with a maturity date of no more than one-month net of bank overdrafts.

Cash at the end of the year is shown in the Statement of Financial Position as:

	2022	2021
Bank accounts	526,268	176,872
<b>Total cash</b>	<b>526,268</b>	<b>176,872</b>

2. RECONCILIATION OF CASH FLOW FROM OPERATING ACTIVITIES WITH OPERATING SURPLUS:

Operating surplus	25,215	195,856
<b>Changes in Assets and Liabilities:</b>		
(Increase) / Decrease in Receivables	192,150	(164,001)
(Increase) / Decrease in Prepaid expenses	(1,686)	-
Increase / (Decrease) in Payables	35,851	(103,001)
(Increase) / Decrease in Provisions	9,069	7,500
(Increase) / Decrease in Unexpended funds	189,189	(114,797)
<b>Net Cash provided by / (used in) Operating Activities</b>	<b>449,788</b>	<b>(178,443)</b>



SOUTH GIPPSLAND LANDCARE NETWORK INC.  
A0051992A  
ABN: 52 166 526 533

NOTES TO THE FINANCIAL STATEMENTS

FOR THE YEAR ENDED 30 JUNE 2022

NOTE 1: STATEMENT OF SIGNIFICANT ACCOUNTING POLICIES

This financial report is a special purpose financial report prepared in order to satisfy the financial reporting requirements of the *Associations Incorporation Reform Act (Vic) 2012* and is also registered as a charity under the *Australian Charities and Not-for-profits Commission Act 2012*. The Board has determined that the association is not a reporting entity.

The financial report has been prepared on an accruals basis and is based on historic costs, except for the cash flow information, and does not take into account changing money values.

The following significant accounting policies, which are consistent with the previous period unless otherwise stated, have been adopted in the preparation of this financial report.

(a) **Income Tax**

No provision for income tax has been raised as the association is exempt from income tax under Div 50 of the *Income Tax Assessment Act 1997*.

(b) **Fixed Assets**

All fixed asset purchases were treated as an item of expense.

(c) **Leases**

The Leongatha Branch of the Returned Services League (Leongatha RSL) is providing office accommodation to South Gippsland Landcare Network Inc. free of charge. In appreciation of the charity work provided to the community by Leongatha RSL, South Gippsland Landcare Network Inc. has agreed to donate \$3,000 per annum.

(d) **Revenue**

Revenue from the sale of goods is recognised upon the delivery of goods to customers. Revenue from the rendering of a service is recognised upon delivery of the services to the customers.

Grant revenue is recognised in the income statement when the entity obtains control of the grant and it is probable that the economic benefits gained from the grant will flow to the entity and the amount of the grant can be reliably measured. If conditions are attached to the grant which must be satisfied before it is eligible to receive the contribution, the recognition of the grant as revenue will be deferred until those conditions are satisfied.

(e) **Employee entitlements**

Provisions for employee leave entitlements have been calculated on the basis of the expected amount to be paid arising from services rendered by employees to balance date. Contributions are made by the association to an employee superannuation fund and are charged as expenses when incurred.

(f) **Goods and Services Tax (GST)**

Revenues, expenses and assets are recognised net of the amount of GST, except where the amount of GST incurred is not recoverable from the Tax Office. In these circumstances, the GST is recognised as part of the cost of acquisition of the asset or as part of an item of the expense. Receivables and payables in the balance sheet are shown inclusive of GST.

Cash flows are presented in the cash flow statement on a gross basis, except for the GST component of investing and financing activities, which are disclosed as operating cash flows.

SOUTH GIPPSLAND LANDCARE NETWORK INC.  
A0051992A  
ABN: 52 166 526 533

NOTES TO THE FINANCIAL STATEMENTS

FOR THE YEAR ENDED 30 JUNE 2022

NOTE 2: UNEXPENDED GRANT FUNDING

The association receives funding from numerous sources relating to specific projects. The balance of each specific project is calculated at the end of the financial year is outlined below:

Project	2022	2021
Biodiversity Protection South Gippsland	4,638	-
Biodiversity Response Planning – Bunurong Coast	19,105	13,027
Biodiversity Response Planning – Western Strezlecki	25,881	41,111
Climate Change Land Capacity Project 18/2020	-	8,581
Combatting Regional Weeds	13,146	10,000
Corner Inlet catchment project	-	3,750
Corner Inlet Coast Care project	5,592	3,029
CVA – Stream 1 Camera Trapping	4,852	-
CVA – Stream 2 On-Ground Action	299	-
Dung Beetle Monitoring	4,540	-
Enhanced Knowledge and Protection of GGEs	23,852	-
Enhancing Soil Biology 20/22	12,450	33,092
Facilitator Funding	63,115	-
Farmers Digging Deeper	(5,560)	-
Gippsland Transport Environmental Regional Roads	48,601	-
Hooded Plover Protection Project	148,809	-
Pedal and Plant Project	2,918	-
Small Farms Small Grants 2	-	91,582
Smart Farming for Westernport	3,975	11,738
Supporting Younger Veterans	41,255	-
Venus Bay Fox Trapping 2021-22	-	14,073
WGCMANational Landcare Conference	1,757	1,768
<b>Total</b>	<b>419,225</b>	<b>231,751</b>

NOTE 3: FUNDS HELD FOR OTHER GROUPS

The association holds funds on behalf of the following organisations. The balance of the amount held at the end of the of the financial year is outlined below:

Agnes River Landcare Group	3,959	3,188
Foster North Landcare Group	3,375	3,375
Friends of Stockyard Creek	239	208
Hallston Regenerative Agricultural Group	1,277	609
Friends of Turton’s Creek Reserve	23,862	23,617
South Gippsland Equine Landcare Group	2,276	2,276
<b>Total</b>	<b>34,988</b>	<b>33,273</b>



SOUTH GIPPSLAND LANDCARE NETWORK INC.  
A0051992A  
ABN: 52 166 526 533

STATEMENT BY MEMBERS OF THE BOARD  
FOR THE YEAR ENDED 30 JUNE 2022

The Board has determined that the association is not a reporting entity and that this special purpose financial report should be prepared in accordance with the accounting policies outlined in Note 1 to the financial statements.

In the opinion of the Board the financial report as set out on pages 1 to 6:

- i) presents a true and fair view of the financial position of South Gippsland Landcare Network Inc. as at 30 June 2022 and its performance for the year ended on that date in accordance with the accounting policies outlined in Note 1 to the financial statements and the requirements of the *Associations Incorporation Reform Act (Vic) 2012* and the *Australian Charities and Not-for-profits Commission Act 2012*.
- ii) at the date of this statement, there are reasonable grounds to believe that South Gippsland Landcare Network Inc. will be able to pay its debts as and when they fall due.

This statement is made in accordance with a resolution of the Board and is signed for and on behalf of the Board by:

Jillian Staton  
Chairperson

John Currier  
Treasurer

4 October 2022

## SGLN Fund Report

The South Gippsland Landcare Fund (Fund) was first set up by SGLN in 2009 to preserve, protect and enhance the long-term sustainability of farming and the environment in South Gippsland.

The Fund's main purpose is to accept donations which can be used to augment and assist SGLN's projects and activities.

100% of donations are used to fund SGLN's programs including:

- revegetation works to repair and restore the treed landscape
- redeveloping and planting wildlife corridors, linking areas of fragmented bushland
- fencing off and replanting riparian areas to rehabilitate waterways and improve water quality, both in the river or stream and the inlets they flow into
- education programs that empower landholders to understand their responsibilities, identify threats and develop solutions to pest plant and animal control, revegetation and land use.

The Fund is registered with the Australia Charities and Not-For-Profit Commission (ACNC) as a Deductible Gift Recipient (DGR). It is also listed in the Register of Environmental Organisations (REO) as eligible to receive tax deductible gifts from the public.

The Fund is also able to accept bequests from estates, and gifts on behalf of nominated donors.

Donations to the Fund can be made online at [www.sgl.n.net.au](http://www.sgl.n.net.au) or [www.givenow.com.au/landcaretrees](http://www.givenow.com.au/landcaretrees).

Once donations are processed, donors are acknowledged by return email and receipts are provided.

All donations go to a great cause!

John Currier  
SGLN Treasurer





SOUTH GIPPSLAND  
LANDCARE FUND  
  
ABN: 52 166 526 533  
  
  
  
SPECIAL PURPOSE FINANCIAL REPORT  
FOR THE YEAR ENDED 30 JUNE 2022

SOUTH GIPPSLAND LANDCARE FUND  
ABN: 52 166 526 533  
  
INCOME STATEMENT  
FOR THE YEAR ENDED 30 JUNE 2022

INCOME	2022	2021
Donations received – PayPal Giving Fund	185.00	-
Donations received – Public Fund	954.80	36,977.80
Interest received	1.47	4.45
<b>TOTAL INCOME</b>	<b>1,141.27</b>	<b>36,982.25</b>
<b>EXPENSES</b>		
Give Now fees	5.33	25.34
<b>TOTAL EXPENSES</b>	<b>5.33</b>	<b>25.34</b>
<b>SURPLUS FOR YEAR</b>	<b>1,135.94</b>	<b>36,956.91</b>
LESS:		
Developing a Biodiversity Protection Plan for South Gippsland	30,000.00	-
Dung Beetle Education Project	4,500.00	-
Agnes River Gorge Project	1,000.00	-
<b>Total grants paid from SGLN Fund</b>	<b>35,500.00</b>	<b>-</b>
<b>NET RESULT FOR THE YEAR</b>	<b>(34,364.06)</b>	<b>36,956.91</b>

The accompanying notes form part of the financial report.

BALANCE SHEET  
AS AT 30 JUNE 2022

ASSETS	2022	2021
Cash and cash equivalents	5,940.34	39,955.33
Donation receivable	153.60	512.00
<b>TOTAL ASSETS</b>	<b>6,093.94</b>	<b>40,467.33</b>
Give Now fees payable	4.00	13.33
<b>TOTAL LIABILITIES</b>	<b>4.00</b>	<b>13.33</b>
<b>NET ASSETS</b>	<b>6,089.94</b>	<b>40,454.00</b>
Opening balance	40,454.00	3,497.09
Surplus / (deficit) for the year	(34,364.06)	36,956.91
<b>EQUITY</b>	<b>6,089.94</b>	<b>40,454.00</b>

The accompanying notes form part of the financial report.



SOUTH GIPPSLAND LANDCARE FUND  
ABN: 52 166 526 533

NOTES TO THE FINANCIAL STATEMENTS

FOR THE YEAR ENDED 30 JUNE 2022

**NOTE 1: STATEMENT OF SIGNIFICANT ACCOUNTING POLICIES**

This financial report is a special purpose financial report prepared in order to satisfy the financial reporting requirements of the Commonwealth Department of the Environment as a Deductible Gift Recipient on the Register of Environmental Organisations.

The Board of the South Gippsland Landcare Network Inc. act as trustees for the Public Fund and have determined that the Public Fund is not a reporting entity.

The financial report has been prepared on a cash basis and is based on historic costs and does not take into account changing money values.

The following significant accounting policies, which are consistent with the previous period unless otherwise stated, have been adopted in the preparation of this financial report.

- (a) **Income Tax**  
No provision for income tax has been raised as the association is exempt from income tax under Div 50 of the *Income Tax Assessment Act 1997*.
- (b) **Fixed Assets**  
Fixed asset purchases are treated as an item of expense.
- (c) **Revenue**  
All revenue is recognised when the entity obtains control over the funds which is generally at the time of receipt.
- (d) **Goods and Services Tax (GST)**  
Income and expenditure are recognised net of the amount of GST, except where the amount of GST incurred is not recoverable from the Australian Tax Office. In these circumstances the GST is recognised as part of an item of the expense.

SOUTH GIPPSLAND LANDCARE FUND  
ABN: 52 166 526 533

STATEMENT BY MEMBERS OF THE BOARD

FOR THE YEAR ENDED 30 JUNE 2022

The Board of South Gippsland Landcare Network Inc. have determined that the Public Fund is not a reporting entity and that this special purpose financial report should be prepared in accordance with the accounting policies outlined in Note 1 to the financial statements.

In the opinion of the Board the financial report as set out on pages 1 to 3:

- I. presents a true and fair view of the financial position of South Gippsland Landcare Fund as at 30 June 2022 and its performance for the year ended on that date in accordance with the accounting policies outlined in Note 1 to the financial statements.
- II. at the date of this statement, there are reasonable grounds to believe that South Gippsland Landcare Fund will be able to pay its debts as and when they fall due.

This statement is made in accordance with a resolution of the Board and is signed for and on behalf of the Board by:

Jillian Staton  
Chairperson

John Currier  
Treasurer

4 October 2022





South Gippsland Landcare Network  
PO Box 419, Leongatha VIC 3953  
info@sgln.net.au  
sgln.net.au

© South Gippsland Landcare Network 2022.  
No part may be reproduced by any process  
except in accordance with the provisions of  
the Copyright Act 1968.